

Anti-CDK5 Antibody (R3Q15)

Summary

Catalog No.	RHF82201
Clone ID	R3Q15
Host species	Mouse
Tested applications	ELISA: 1:10000, FCM: 1:200-1:400, IF: 1:200-1:1000, IHC: 1:200-1:1000, WB: 1:500-1:2000
Species reactivity	Human, Rat, Monkey
Form	Liquid
Storage buffer	0.01M PBS, pH 7.4, 0.05% Sodium Azide.
Concentration	1 mg/ml
Purity	>95% as determined by SDS-PAGE.
Clonality	Monoclonal
Isotype	IgG1
Applications	ELISA, FCM, IF, IHC, WB
Target	Cell division protein kinase 5, Cyclin-dependent-like kinase 5, TPKII catalytic subunit, Serine/threonine-protein kinase PSSALRE, Tau protein kinase II catalytic subunit, CDK5, CDKN5
Purification	Protein A/G purified from cell culture supernatant.
Endotoxin level	Please contact with the lab for this information.
Accession	Q00535

Stability and Storage

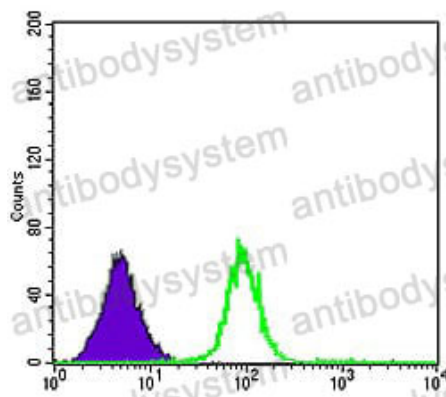
Use a manual defrost freezer and avoid repeated freeze-thaw cycles.

Store at 4°C short term (1-2 weeks). Store at -20°C 12 months. Store at -80°C long term.

Note

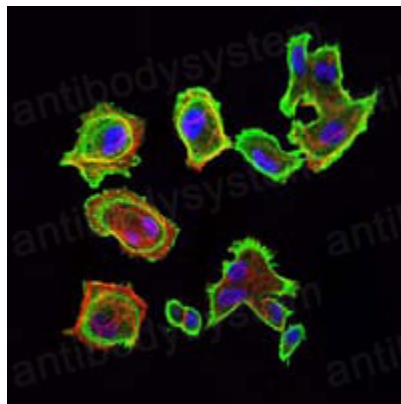
For research use only.

Data Image



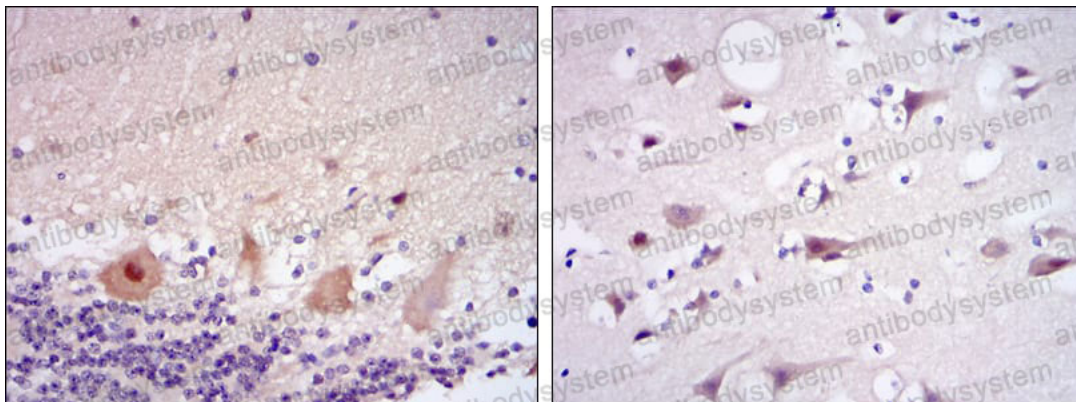
Flow Cytometry

Flow cytometric analysis of K562 cells using CDK5 mouse mAb (green) and negative control (purple).



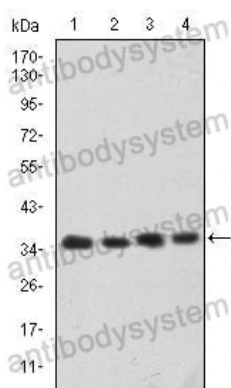
Immunofluorescence

Immunofluorescence analysis of GC7901 cells using CDK5 mouse mAb (green). Blue: DRAQ5 fluorescent DNA dye. Red: Actin filaments have been labeled with Alexa Fluor-555 phalloidin.



Immunohistochemical analysis of paraffin-embedded human cerebellum tissues (left) and brain tissues (right) using CDK5 mouse mAb with DAB staining.

Immunohistochemical



Western blot analysis using CDK5 mouse mAb against Hela (1), K562 (2), PC-12 (3) and Cos7 (4) cell lysate.

Western blot