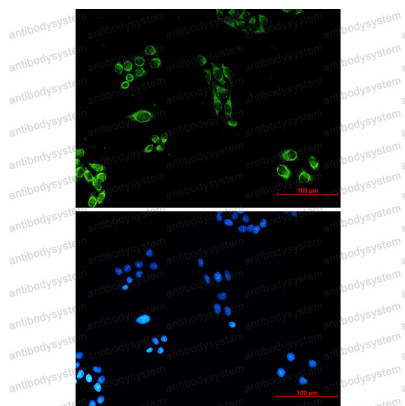


Anti-CYCS Antibody (R3Q11)

Summary

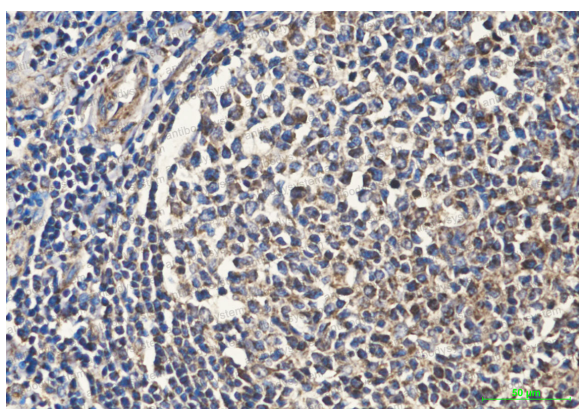
Catalog No.	RHF80805
Clone ID	R3Q11
Host species	Mouse
Tested applications	IF: 1:50-1:200, IHC: 1:50-1:100, WB: 1:500-1:1000
Species reactivity	Human, Mouse, Rat, Chicken
Form	Liquid
Storage buffer	0.01M PBS, pH 7.4, 0.5% BSA, 0.05% Sodium Azide and 50% Glycerol.
Concentration	1 mg/ml
Purity	>95% as determined by SDS-PAGE.
Clonality	Monoclonal
Isotype	IgG1
Applications	IF, IHC, WB
Target	CYC, Cytochrome c, CYCS
Purification	Protein A/G purified from cell culture supernatant.
Endotoxin level	Please contact with the lab for this information.
Accession	P99999
Stability and Storage	Use a manual defrost freezer and avoid repeated freeze-thaw cycles. Store at 4°C short term (1-2 weeks). Store at -20°C 12 months. Store at -80°C long term.
Note	For research use only.

Data Image



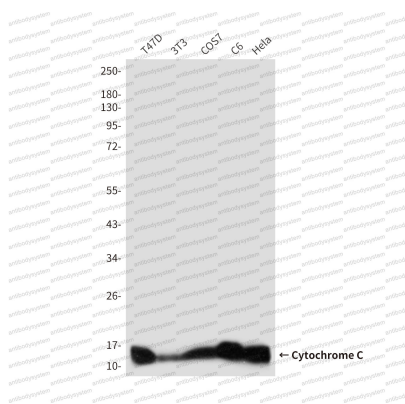
Immunofluorescence

Immunocytochemistry analysis of Cytochrome C (7C1) (green) in HeLa using Cytochrome C (7C1) antibody ,and DAPI(blue)



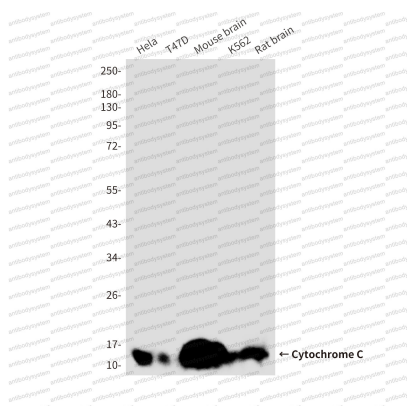
Immunohistochemical

Immunohistochemistry analysis of paraffin-embedded human tonsil tissue using Cytochrome C antibody.High-pressure and temperature Sodium Citrate pH 6.0 was used for antigen retrieval.



Western blot

Western blot analysis of Cytochrome c in T47D, 3T3, COS7, C6 and HeLa lysates using Cytochrome c antibody.



Western blot

Western blot analysis of Cytochrome C in Hela, T47D, mouse brain, K562, rat brain lysates using Cytochrome C antibody.