

Anti-ATP2C1 Antibody (R3Q08)

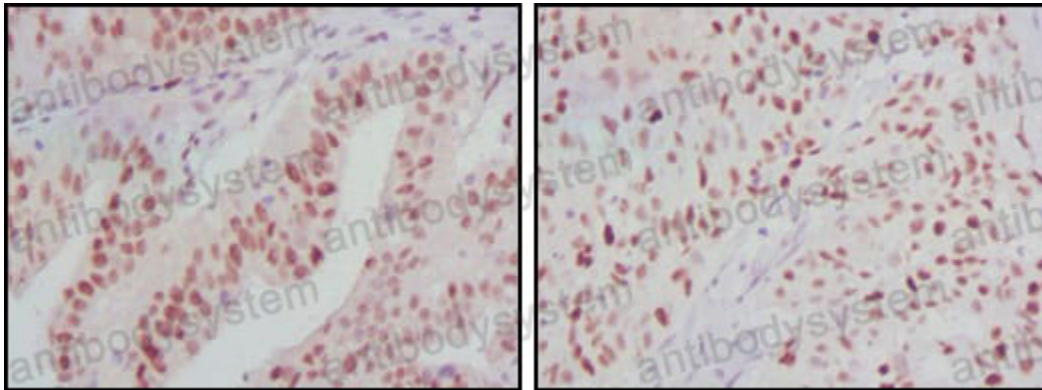
Summary

Catalog No.	RHF80501
Clone ID	R3Q08
Host species	Mouse
Tested applications	IHC: 1:200-1:1000, WB: 1:500-1:2000
Species reactivity	Human, Monkey
Form	Liquid
Storage buffer	0.01M PBS, pH 7.4, 0.05% Sodium Azide.
Concentration	1 mg/ml
Purity	>95% as determined by SDS-PAGE.
Clonality	Monoclonal
Isotype	IgG1
Applications	IHC, WB
Target	Calcium-transporting ATPase type 2C member 1, ATP-dependent Ca(2+) pump PMR1, PMR1L, KIAA1347, ATP2C1, ATPase 2C1
Purification	Protein A/G purified from cell culture supernatant.
Endotoxin level	Please contact with the lab for this information.
Accession	P98194
Stability and Storage	Use a manual defrost freezer and avoid repeated freeze-thaw cycles. Store at 4°C short term (1-2 weeks). Store at -20°C 12 months. Store at -80°C long term.

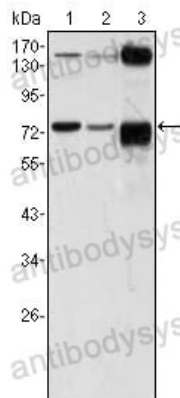
Note

For research use only.

Data Image



Immunohistochemical analysis of paraffin-embedded human ovarian cancer (left) and breast cancer (right) tissues using ATP2C1 mouse mAb with DAB staining.

Immunohistochemical

Western blot analysis using ATP2C1 mouse mAb against A431 (1), Hela (2) and HEK293 (3) cell lysate.

Western blot