

# Anti-DAB2/DOC2 Antibody (R3Q01)

## Summary

---

<b>Catalog No.</b>	RHF78503
<b>Clone ID</b>	R3Q01
<b>Host species</b>	Mouse
<b>Tested applications</b>	ELISA: 1:10000, FCM: 1:200-1:400, IF: 1:200-1:1000
<b>Species reactivity</b>	Human
<b>Form</b>	Liquid
<b>Storage buffer</b>	0.01M PBS, pH 7.4, 0.05% Sodium Azide.
<b>Concentration</b>	1 mg/ml
<b>Purity</b>	>95% as determined by SDS-PAGE.
<b>Clonality</b>	Monoclonal
<b>Isotype</b>	IgG1
<b>Applications</b>	ELISA, FCM, IF
<b>Target</b>	DOC-2, Adaptor molecule disabled-2, Differentially-expressed protein 2, Disabled homolog 2, Differentially expressed in ovarian carcinoma 2, DOC2, DAB2
<b>Purification</b>	Protein A/G purified from cell culture supernatant.
<b>Endotoxin level</b>	Please contact with the lab for this information.
<b>Accession</b>	P98082

**Stability and Storage**

Use a manual defrost freezer and avoid repeated freeze-thaw cycles.

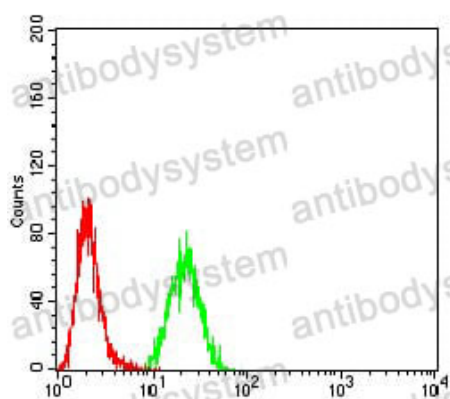
Store at 4°C short term (1-2 weeks). Store at -20°C 12 months. Store at -80°C long term.

**Note**

For research use only.

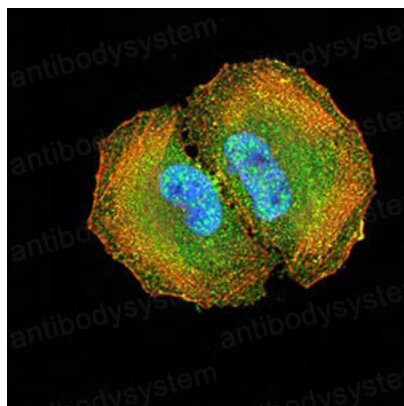
## Data Image

---



Flow Cytometry

Flow cytometric analysis of Hela cells using DOC2 mouse mAb (green) and negative control (red).



Immunofluorescence

Immunofluorescence analysis of Hela cells using DOC2 mouse mAb (green). Blue: DRAQ5 fluorescent DNA dye. Red: Actin filaments have been labeled with Alexa Fluor- 555 phalloidin.