

Anti-SMAD2/3 Antibody (R3P97)

Summary

Catalog No.	RHF75509
Clone ID	R3P97
Host species	Mouse
Tested applications	IHC: 1:50-1:100, WB: 1:500-1:1000
Species reactivity	Human, Mouse, Rat
Form	Liquid
Storage buffer	0.01M PBS, pH 7.4, 0.5% BSA, 0.05% Sodium Azide and 50% Glycerol.
Concentration	1 mg/ml
Purity	>95% as determined by SDS-PAGE.
Clonality	Monoclonal
Isotype	IgG
Applications	IHC, WB
Target	Mad3, JV15-2, Mothers against decapentaplegic homolog 3, SMAD family member 3, Smad3, SMAD3, MADH3, hMAD-3, SMAD 3, MAD homolog 3, hSMAD3, Mothers against DPP homolog 3, Mothers against decapentaplegic homolog 2, SMAD 2, SMAD2, JV18-1, Mad-related protein 2, hMAD-2, MADR2, Mothers against DPP homolog 2, SMAD family member 2, MADH2, Smad2, hSMAD2, MAD homolog 2
Purification	Protein A/G purified from cell culture supernatant.
Endotoxin level	Please contact with the lab for this information.
Accession	P84022,Q15796

Stability and Storage

Use a manual defrost freezer and avoid repeated freeze-thaw cycles.

Store at 4°C short term (1-2 weeks). Store at -20°C 12 months. Store at -80°C long term.

Note

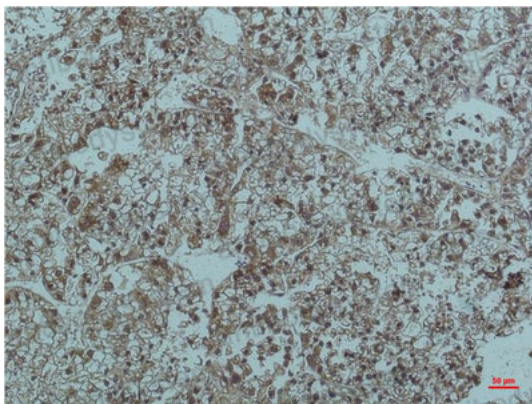
For research use only.

Data Image



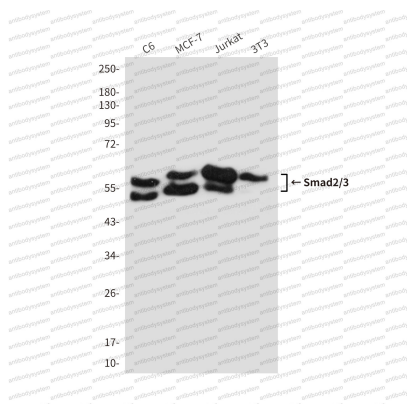
Immunohistochemical

Immunohistochemical analysis of paraffin-embedded Human tonsils using Smad2/3 antibody. High-pressure and temperature Sodium Citrate pH 6.0 was used for antigen retrieval.



Immunohistochemical

Immunohistochemistry analysis of paraffin-embedded Human Liver tissue using Smad2/3 antibody. High-pressure and temperature Sodium Citrate pH 6.0 was used for antigen retrieval.



Western blot

Western blot analysis of Smad2/3 in C6, MCF-7, Jurkat and 3T3 lysates using Smad2/3 antibody