

Anti-SMAD3 Antibody (R3P96)

Summary

Catalog No.	RHF75508
Clone ID	R3P96
Host species	Mouse
Tested applications	IHC: 1:50-1:100, WB: 1:500-1:1000
Species reactivity	Human, Mouse, Rat
Form	Liquid
Storage buffer	0.01M PBS, pH 7.4, 0.5% BSA, 0.05% Sodium Azide and 50% Glycerol.
Concentration	1 mg/ml
Purity	>95% as determined by SDS-PAGE.
Clonality	Monoclonal
Isotype	IgG1
Applications	IHC, WB
Target	Mad3, JV15-2, Mothers against decapentaplegic homolog 3, SMAD family member 3, Smad3, SMAD3, MADH3, hMAD-3, SMAD 3, MAD homolog 3, hSMAD3, Mothers against DPP homolog 3
Purification	Protein A/G purified from cell culture supernatant.
Endotoxin level	Please contact with the lab for this information.
Accession	P84022

Stability and Storage

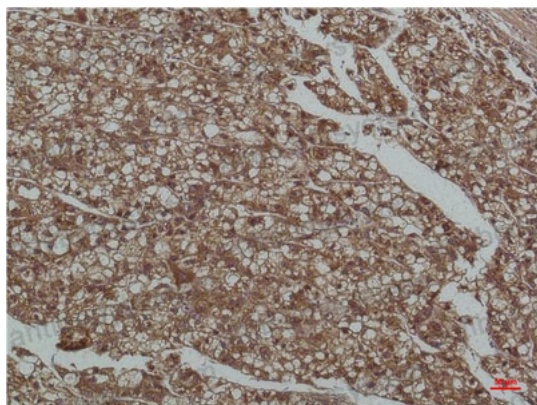
Use a manual defrost freezer and avoid repeated freeze-thaw cycles.

Store at 4°C short term (1-2 weeks). Store at -20°C 12 months. Store at -80°C long term.

Note

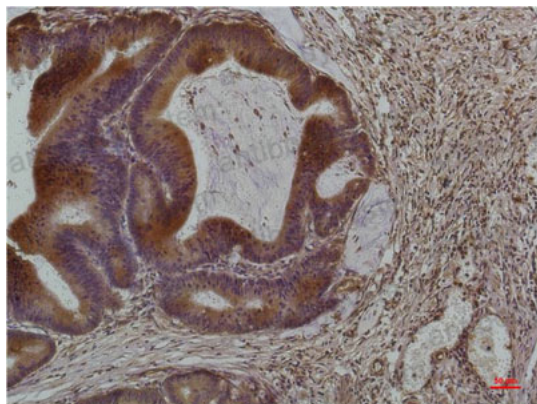
For research use only.

Data Image



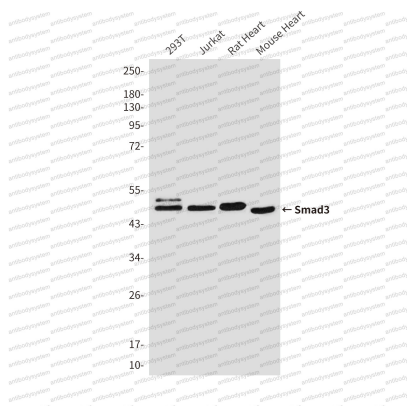
Immunohistochemical

Immunohistochemistry analysis of paraffin-embedded Human Liver Tissue using Smad3 antibody. High-pressure and temperature Sodium Citrate pH 6.0 was used for antigen retrieval.



Immunohistochemical

Immunohistochemistry analysis of paraffin-embedded Human Colon Carcinoma using Smad3 antibody. High-pressure and temperature Sodium Citrate pH 6.0 was used for antigen retrieval.



Western blot

Western blot analysis of Smad3 (4H4) in 293T, Jurkat, rat Heart, mouse Heart lysates using Smad3 antibody.