

# Anti-CBX1 Antibody (R3P92)

## Summary

---

<b>Catalog No.</b>	RHF75403
<b>Clone ID</b>	R3P92
<b>Host species</b>	Mouse
<b>Tested applications</b>	ELISA: 1:10000, IHC: 1:200-1:1000
<b>Species reactivity</b>	Human
<b>Form</b>	Liquid
<b>Storage buffer</b>	0.01M PBS, pH 7.4, 0.05% Sodium Azide.
<b>Concentration</b>	1 mg/ml
<b>Purity</b>	>95% as determined by SDS-PAGE.
<b>Clonality</b>	Monoclonal
<b>Isotype</b>	IgG1
<b>Applications</b>	ELISA, IHC
<b>Target</b>	HP1Hsbeta, CBX, Chromobox protein homolog 1, Modifier 1 protein, Heterochromatin protein 1 homolog beta, HP1 beta, M31, CBX1, p25beta, Heterochromatin protein p25
<b>Purification</b>	Protein A/G purified from cell culture supernatant.
<b>Endotoxin level</b>	Please contact with the lab for this information.
<b>Accession</b>	P83916

## Recombinant Proteins &amp; Antibodies

**Stability and Storage**

Use a manual defrost freezer and avoid repeated freeze-thaw cycles.

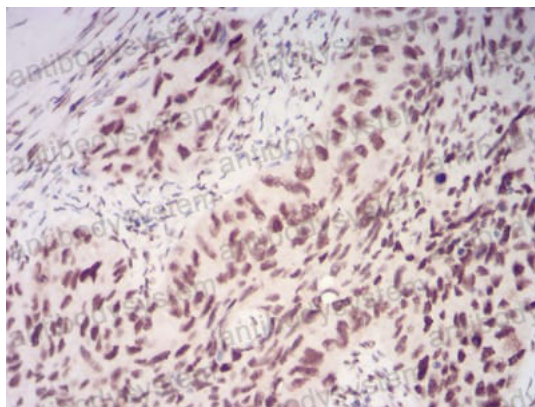
Store at 4°C short term (1-2 weeks). Store at -20°C 12 months. Store at -80°C long term.

**Note**

For research use only.

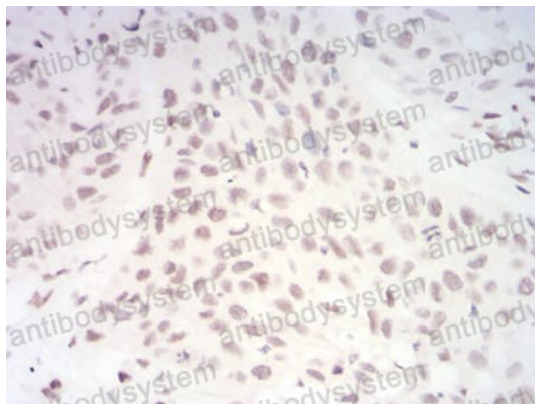
**Data Image**

---



Immunohistochemical

Immunohistochemical analysis of paraffin-embedded human cervical cancer tissues using CBX1 mouse mAb with DAB staining.



Immunohistochemical

Immunohistochemical analysis of paraffin-embedded human esophageal cancer tissues using CBX1 mouse mAb with DAB staining.