

# Anti-S100A12 Antibody (R3P90)

## Summary

---

<b>Catalog No.</b>	RHF71601
<b>Clone ID</b>	R3P90
<b>Host species</b>	Mouse
<b>Tested applications</b>	IHC: 1:100-1:200, WB: 1:500-1:1000
<b>Species reactivity</b>	Human
<b>Form</b>	Liquid
<b>Storage buffer</b>	0.01M PBS, pH 7.4, 0.05% Sodium Azide.
<b>Concentration</b>	1 mg/ml
<b>Purity</b>	>95% as determined by SDS-PAGE.
<b>Clonality</b>	Monoclonal
<b>Isotype</b>	IgG1
<b>Applications</b>	IHC, WB
<b>Target</b>	Migration inhibitory factor-related protein 6, MRP-6, Extracellular newly identified RAGE-binding protein, p6, Calcium-binding protein in amniotic fluid 1, Calgranulin-C, Protein S100-A12, CGRP, S100 calcium-binding protein A12, Neutrophil S100 protein, CAAF1, EN-RAGE, S100A12, CAGC
<b>Purification</b>	Protein A/G purified from cell culture supernatant.
<b>Endotoxin level</b>	Please contact with the lab for this information.
<b>Accession</b>	P80511

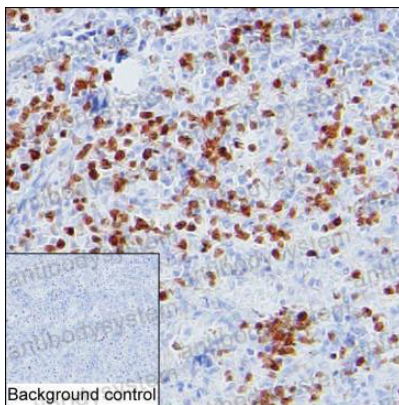
**Stability and Storage**

Use a manual defrost freezer and avoid repeated freeze-thaw cycles.

Store at 4°C short term (1-2 weeks). Store at -20°C 12 months. Store at -80°C long term.

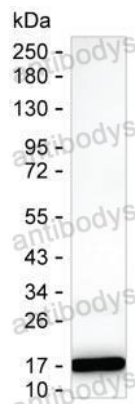
**Note**

For research use only.

**Data Image**

Immunohistochemical

IHC-P analysis of spleen tissue by S100A12 antibody (RHF71601). IHC-P was performed using sections of the formalin-fixed paraffin-embedded spleen tissue; Result: Cells in red pulp are positively stained at the cytoplasm and nuclei.



Western blot

Result: RHF71601 can detect human S100A12 by Western blotting.