

Anti-NUCB2 Antibody (R3P88)

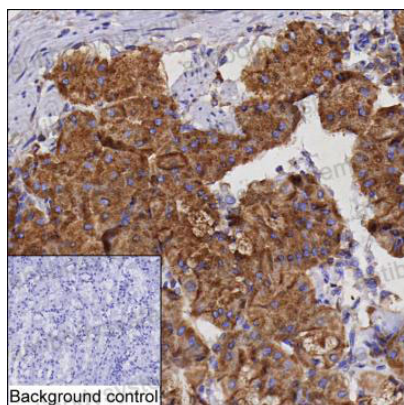
Summary

Catalog No.	RHF71201
Clone ID	R3P88
Host species	Mouse
Tested applications	IHC: 1:100-1:200, IP: 1:100-1:200, WB: 1:500-1:1000
Species reactivity	Human
Form	Liquid
Storage buffer	0.01M PBS, pH 7.4, 0.05% Sodium Azide.
Concentration	1 mg/ml
Purity	>95% as determined by SDS-PAGE.
Clonality	Monoclonal
Isotype	IgG1
Applications	IHC, IP, WB
Target	NEFA, Gastric cancer antigen Zg4, Prepronesfatin, NUCB2, DNA-binding protein NEFA, Nucleobindin-2, Epididymis secretory protein Li 109
Purification	Protein A/G purified from cell culture supernatant.
Endotoxin level	Please contact with the lab for this information.
Accession	P80303
Stability and Storage	Use a manual defrost freezer and avoid repeated freeze-thaw cycles. Store at 4°C short term (1-2 weeks). Store at -20°C 12 months. Store at -80°C long term.

Note

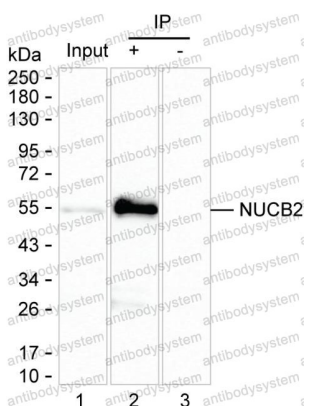
For research use only.

Data Image



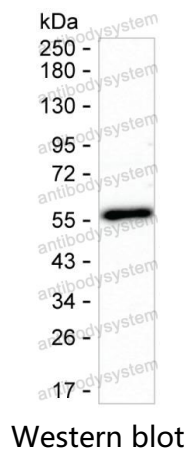
Immunohistochemical

IHC-P analysis of stomach tissue by NUCB2 antibody (RHF71201). IHC-P was performed using sections of the formalin-fixed paraffin-embedded stomach tissue; Result: Glandular cells are positively stained at the cytoplasm.



Immunoprecipitation

Lane 1: HL-60 lysate ; Lane 2: NUCB2 immunoprecipitated from HL-60 lysate by RHF71201; Lane 3: The same as Lane 2 but use IgG isotype control antibody ; Result: RHF71201 can immunoprecipitate NUCB2;



Western blot analysis using NUCB2 mouse mAb
against HL-60 lysate