

Anti-CXCL6/GCP-2 Antibody (R3P87)

Summary

Catalog No.	RHF70601
Clone ID	R3P87
Host species	Mouse
Tested applications	WB: 1:500-1:1000
Species reactivity	Human
Form	Liquid
Storage buffer	0.01M PBS, pH 7.4, 0.05% Sodium Azide.
Concentration	1 mg/ml
Purity	>95% as determined by SDS-PAGE.
Clonality	Monoclonal
Isotype	IgG2b
Applications	WB
Target	C-X-C motif chemokine 6, SCYB6, Small-inducible cytokine B6, CXCL6, CKA-3, Chemokine alpha 3, Granulocyte chemotactic protein 2, GCP2, GCP-2
Purification	Protein A/G purified from cell culture supernatant.
Endotoxin level	Please contact with the lab for this information.
Accession	P80162

Stability and Storage

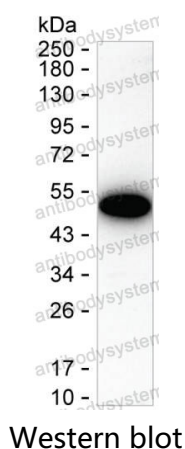
Use a manual defrost freezer and avoid repeated freeze-thaw cycles.

Store at 4°C short term (1-2 weeks). Store at -20°C 12 months. Store at -80°C long term.

Note

For research use only.

Data Image



Result: RHF70601 can detect CXCL6 by Western blotting.