

Anti-CCL7/MCP-3 Antibody (R3P86)

Summary

Catalog No.	RHF70401
Clone ID	R3P86
Host species	Mouse
Tested applications	WB: 1:500-1:1000
Species reactivity	Human
Form	Liquid
Storage buffer	0.01M PBS, pH 7.4, 0.05% Sodium Azide.
Concentration	1 mg/ml
Purity	>95% as determined by SDS-PAGE.
Clonality	Monoclonal
Isotype	IgG1
Applications	WB
Target	C-C motif chemokine 7, MCP-3, CCL7, Monocyte chemotactic protein 3, Monocyte chemoattractant protein 3, NC28, Small-inducible cytokine A7, SCYA6, SCYA7, MCP3
Purification	Protein A/G purified from cell culture supernatant.
Endotoxin level	Please contact with the lab for this information.
Accession	P80098

Stability and Storage

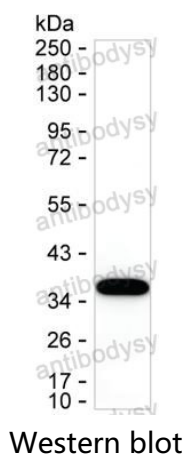
Use a manual defrost freezer and avoid repeated freeze-thaw cycles.

Store at 4°C short term (1-2 weeks). Store at -20°C 12 months. Store at -80°C long term.

Note

For research use only.

Data Image



Result: RHF70401 can detect human CCL7 by Western blotting.