

Anti-CCL8/MCP-2 Antibody (R3P84)

Summary

Catalog No.	RHF70302
Clone ID	R3P84
Host species	Mouse
Tested applications	WB: 1:500-1:1000
Species reactivity	Human
Form	Liquid
Storage buffer	0.01M PBS, pH 7.4, 0.05% Sodium Azide.
Concentration	1 mg/ml
Purity	>95% as determined by SDS-PAGE.
Clonality	Monoclonal
Isotype	IgG1
Applications	WB
Target	Monocyte chemoattractant protein 2, Small-inducible cytokine A8, HC14, C-C motif chemokine 8, SCYA10, MCP2, SCYA8, CCL8, Monocyte chemotactic protein 2, MCP-2
Purification	Protein A/G purified from cell culture supernatant.
Endotoxin level	Please contact with the lab for this information.
Accession	P80075

Stability and Storage

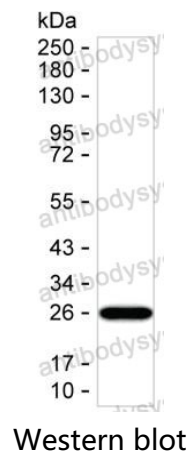
Use a manual defrost freezer and avoid repeated freeze-thaw cycles.

Store at 4°C short term (1-2 weeks). Store at -20°C 12 months. Store at -80°C long term.

Note

For research use only.

Data Image



Result: RHF70302 can detect CCL8 by Western blotting.