

# Anti-PRKDC Antibody (R3P80)

## Summary

---

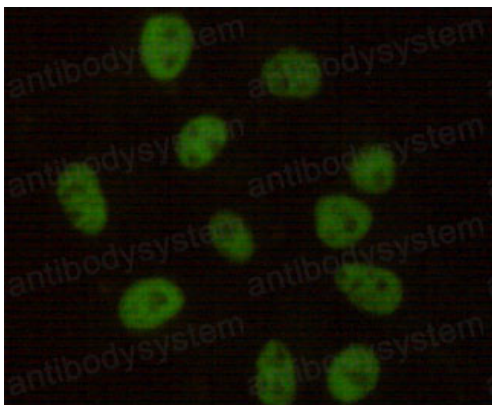
<b>Catalog No.</b>	RHF68703
<b>Clone ID</b>	R3P80
<b>Host species</b>	Mouse
<b>Tested applications</b>	IF: 1:50-1:200, IHC: 1:50-1:100, IP: 1:20, WB: 1:500-1:1000
<b>Species reactivity</b>	Human
<b>Form</b>	Liquid
<b>Storage buffer</b>	0.01M PBS, pH 7.4, 0.5% BSA, 0.05% Sodium Azide and 50% Glycerol.
<b>Concentration</b>	1 mg/ml
<b>Purity</b>	>95% as determined by SDS-PAGE.
<b>Clonality</b>	Monoclonal
<b>Isotype</b>	IgG1
<b>Applications</b>	IF, IHC, IP, WB
<b>Target</b>	DNPK1, HYRC1, p460, DNA-dependent protein kinase catalytic subunit, PRKDC, DNA-PK catalytic subunit, HYRC, DNA-PKcs
<b>Purification</b>	Protein A/G purified from cell culture supernatant.
<b>Endotoxin level</b>	Please contact with the lab for this information.
<b>Accession</b>	P78527
<b>Stability and Storage</b>	Use a manual defrost freezer and avoid repeated freeze-thaw cycles. Store at 4°C short term (1-2 weeks). Store at -20°C 12 months. Store at -80°C long term.

**Note**

For research use only.

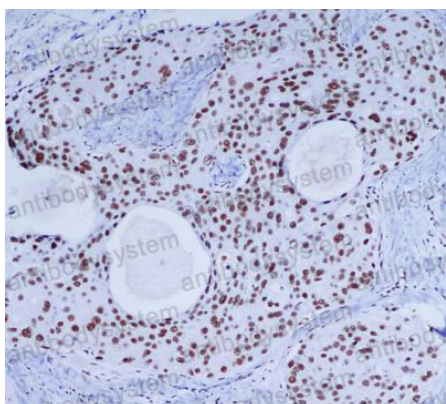
## Data Image

---



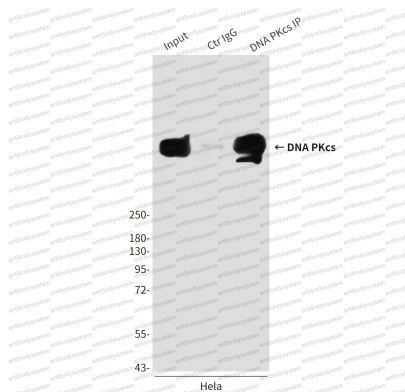
Immunofluorescence

Immunocytochemistry analysis of DNA PKcs in HeLa using DNAPKcs antibody.



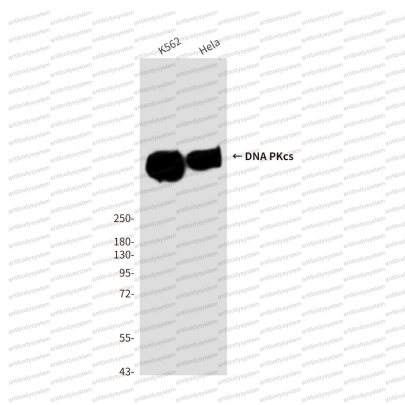
Immunohistochemical

Immunohistochemistry analysis of paraffin-embedded Breast cancer using DNAPKcs antibody. High-pressure and temperature Sodium Citrate pH 6.0 was used for antigen retrieval.



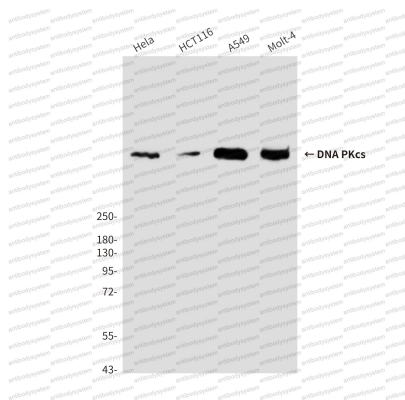
Immunoprecipitation

Immunoprecipitation analysis of DNA PKcs in HeLa lysates using DNAPKcs antibody.



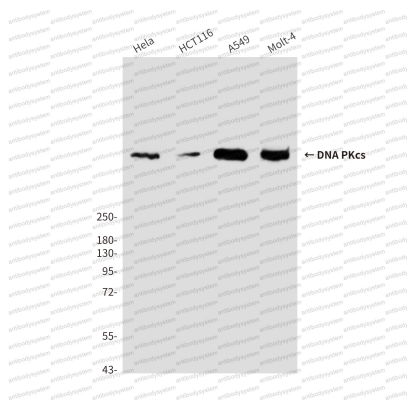
Western blot

Western blot analysis of DNAPKcs in HeLa and K562 lysates using DNAPKcs antibody.



Western blot

Western blot analysis of DNAPKcs in HeLa, Molt4, A549 and HCT116 lysates using DNAPKcs antibody.



Western blot

Western blot analysis of DNAPKcs in HeLa, Molt4, A549 and HCT116 lysates using DNAPKcs antibody.