

Anti-SRPK2 Antibody (R3P70)

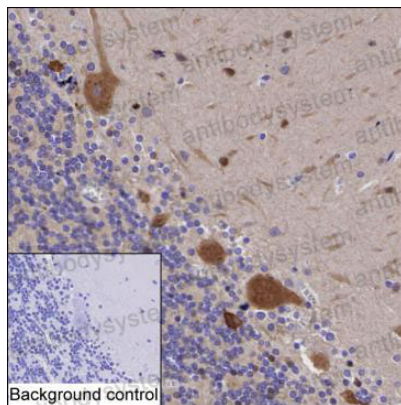
Summary

Catalog No.	RHF65701
Clone ID	R3P70
Host species	Mouse
Tested applications	IHC: 1:100-1:200, WB: 1:500-1:1000
Species reactivity	Human
Form	Liquid
Storage buffer	0.01M PBS, pH 7.4, 0.05% Sodium Azide.
Concentration	1 mg/ml
Purity	>95% as determined by SDS-PAGE.
Clonality	Monoclonal
Isotype	IgG2a
Applications	IHC, WB
Target	Serine/arginine-rich protein-specific kinase 2, SRPK2, SR-protein-specific kinase 2, SFRS protein kinase 2, SRSF protein kinase 2
Purification	Protein A/G purified from cell culture supernatant.
Endotoxin level	Please contact with the lab for this information.
Accession	P78362
Stability and Storage	Use a manual defrost freezer and avoid repeated freeze-thaw cycles. Store at 4°C short term (1-2 weeks). Store at -20°C 12 months. Store at -80°C long term.

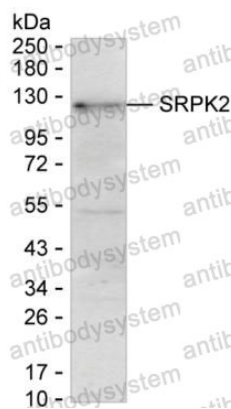
Note

For research use only.

Data Image

**Immunohistochemical**

IHC-P analysis of cerebellum tissue by SRPK2 antibody (RHF65701). IHC-P was performed using sections of the formalin-fixed paraffin-embedded cerebellum tissue; Result: Purkinje cells are positively stained at the cytoplasm of cell body and dendrite.

**Western blot**

Western blot analysis using SRPK2 mouse mAb against A-431 lysate