

Anti-CTAG1A/NY-ESO-1/LAGE-2 Antibody (R3P69)

Summary

Catalog No.	RHF65602
Clone ID	R3P69
Host species	Mouse
Tested applications	IHC: 1:100-1:200
Species reactivity	Human
Form	Liquid
Storage buffer	0.01M PBS, pH 7.4, 0.05% Sodium Azide.
Concentration	1 mg/ml
Purity	>95% as determined by SDS-PAGE.
Clonality	Monoclonal
Isotype	IgG1
Applications	IHC
Target	LAGE2B, CTAG1, Autoimmunogenic cancer/testis antigen NY-ESO-1, Cancer/testis antigen 6.1, CTAG1A, L antigen family member 2, Cancer/testis antigen 1, LAGE2A, ESO1, CTAG, LAGE-2, LAGE2, CT6.1
Purification	Protein A/G purified from cell culture supernatant.
Endotoxin level	Please contact with the lab for this information.
Accession	P78358

Stability and Storage

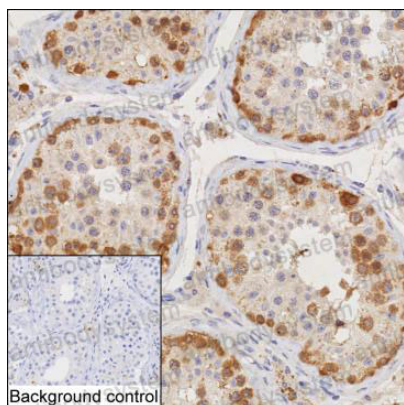
Use a manual defrost freezer and avoid repeated freeze-thaw cycles.

Store at 4°C short term (1-2 weeks). Store at -20°C 12 months. Store at -80°C long term.

Note

For research use only.

Data Image



Immunohistochemical

IHC-P analysis of testis tissue by CTAG1A antibody (RHF65602). IHC-P was performed using sections of the formalin-fixed paraffin-embedded testis tissue; Result: Spermatogonia and spermatocytes are positively stained at the cytoplasm.