

# Anti-DLG4/PSD95 Antibody (R3P67)

## Summary

---

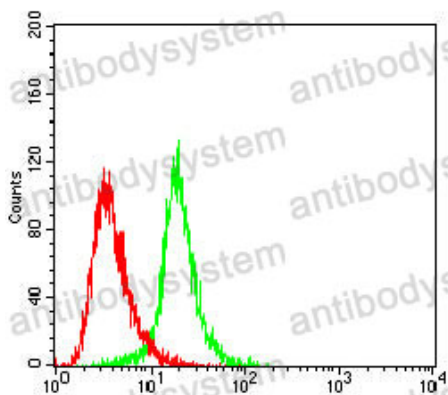
<b>Catalog No.</b>	RHF65304
<b>Clone ID</b>	R3P67
<b>Host species</b>	Mouse
<b>Tested applications</b>	ELISA: 1:10000, FCM: 1:200-1:400, WB: 1:500-1:2000
<b>Species reactivity</b>	Human, Mouse, Rat
<b>Form</b>	Liquid
<b>Storage buffer</b>	0.01M PBS, pH 7.4, 0.05% Sodium Azide.
<b>Concentration</b>	1 mg/ml
<b>Purity</b>	>95% as determined by SDS-PAGE.
<b>Clonality</b>	Monoclonal
<b>Isotype</b>	IgG1
<b>Applications</b>	ELISA, FCM, WB
<b>Target</b>	PSD-95, PSD95, Disks large homolog 4, Synapse-associated protein 90, DLG4, Postsynaptic density protein 95, SAP-90, SAP90
<b>Purification</b>	Protein A/G purified from cell culture supernatant.
<b>Endotoxin level</b>	Please contact with the lab for this information.
<b>Accession</b>	P78352
<b>Stability and Storage</b>	Use a manual defrost freezer and avoid repeated freeze-thaw cycles. Store at 4°C short term (1-2 weeks). Store at -20°C 12 months. Store at -80°C long term.

**Note**

For research use only.

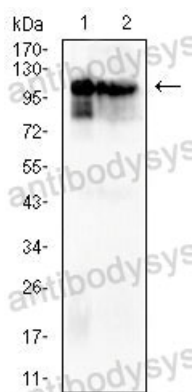
## Data Image

---



Flow Cytometry

Flow cytometric analysis of K562 cells using DLG4 mouse mAb (green) and negative control (red).



Western blot

Western blot analysis using DLG4 mouse mAb against Mouse Brain (1) and Rat Brain (2) tissue lysate.