

Anti-Histone H3 (Zebrafish Specific) Antibody (R3P60)

Summary

Catalog No.	RHF62759
Clone ID	R3P60
Host species	Mouse
Tested applications	WB: 1:500-1:1000
Species reactivity	Human, Mouse, Rat, Zebrafish
Form	Liquid
Storage buffer	0.01M PBS, pH 7.4, 0.5% BSA, 0.05% Sodium Azide and 50% Glycerol.
Concentration	1 mg/ml
Purity	>95% as determined by SDS-PAGE.
Clonality	Monoclonal
Isotype	IgG1
Applications	WB
Target	Histone H3/j, Histone H3/b, Histone H3/d, Histone H3/c, HIST1H3B, H3FH, Histone H3/f, H3FF, H3FK, HIST1H3G, H3FL, H3FB, HIST1H3D, Histone H3/a, H3FI, Histone H3/i, H3FD, HIST1H3A, Histone H3/h, HIST1H3I, HIST1H3E, HIST1H3H, HIST1H3J, H3C1, H3FC HIST1H3C, H3FA, Histone H3.1, H3FJ, Histone H3/l, Histone H3/k, HIST1H3F
Purification	Protein A/G purified from cell culture supernatant.
Endotoxin level	Please contact with the lab for this information.

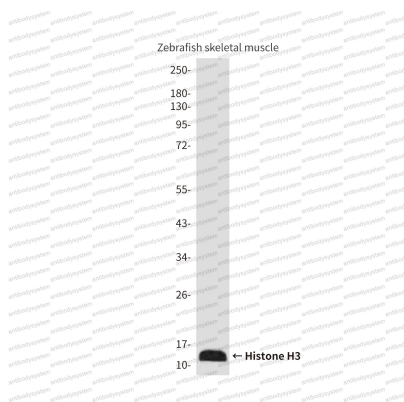
Recombinant Proteins & Antibodies

Accession P68431

Stability and Storage Use a manual defrost freezer and avoid repeated freeze-thaw cycles.
Store at 4°C short term (1-2 weeks). Store at -20°C 12 months. Store at -80°C long term.

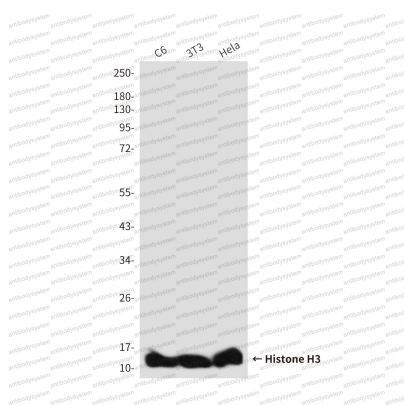
Note For research use only.

Data Image



Western blot

Western blot analysis of Histone H3 (Zebrafish Specific) in Zebrafish skeletal muscle lysates using Histone H3 (Zebrafish Specific) antibody



Western blot

Western blot analysis of Histone H3 (Zebrafish Specific) in C6, 3T3, HeLa lysates using Histone H3 (Zebrafish Specific) antibody.