

# Anti-DiMethyl-Histone H3 (Lys27) Antibody (R3P54)

## Summary

---

|                            |   |
|----------------------------|---|
| <b>Catalog No.</b>         | RHF62753  |
| <b>Clone ID</b>            | R3P54   |
| <b>Host species</b>        | Mouse   |
| <b>Tested applications</b> | IF: 1:50-1:200, IP: 1:20, WB: 1:500-1:1000  |
| <b>Species reactivity</b>  | Human, Mouse, Rat   |
| <b>Form</b>                | Liquid  |
| <b>Storage buffer</b>      | 0.01M PBS, pH 7.4, 0.5% BSA, 0.05% Sodium Azide and 50% Glycerol.   |
| <b>Concentration</b>       | 1 mg/ml   |
| <b>Purity</b>              | >95% as determined by SDS-PAGE.   |
| <b>Clonality</b>           | Monoclonal  |
| <b>Isotype</b>             | IgG1  |
| <b>Applications</b>        | IF, IP, WB  |
| <b>Target</b>              | Histone H3/j, Histone H3/b, Histone H3/d, Histone H3/c, HIST1H3B, H3FH, Histone H3/f, H3FF, H3FK, HIST1H3G, H3FL, H3FB, HIST1H3D, Histone H3/a, H3FI, Histone H3/i, H3FD, HIST1H3A, Histone H3/h, HIST1H3I, HIST1H3E, HIST1H3H, HIST1H3J, H3C1, H3FC HIST1H3C, H3FA, Histone H3.1, H3FJ, Histone H3/l, Histone H3/k, HIST1H3F |
| <b>Purification</b>        | Protein A/G purified from cell culture supernatant.   |
| <b>Endotoxin level</b>     | Please contact with the lab for this information.   |
| <b>Accession</b>           | P68431  |

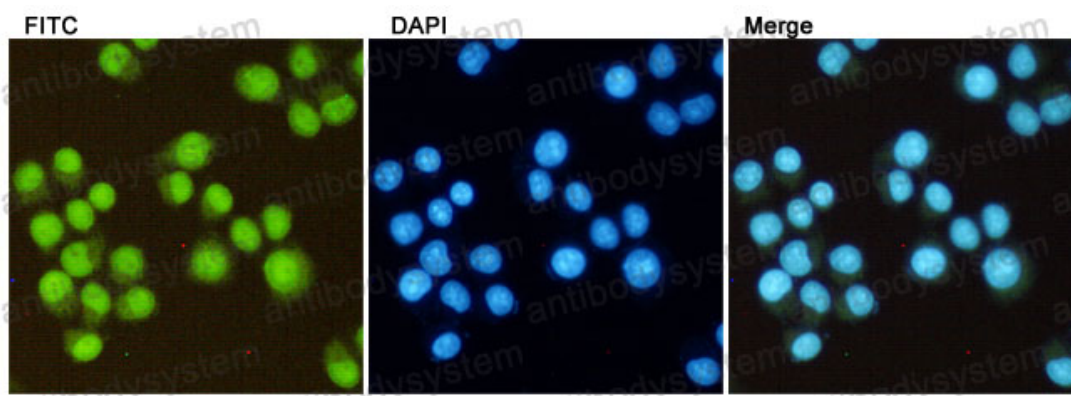
**Stability and Storage**

Use a manual defrost freezer and avoid repeated freeze-thaw cycles.

Store at 4°C short term (1-2 weeks). Store at -20°C 12 months. Store at -80°C long term.

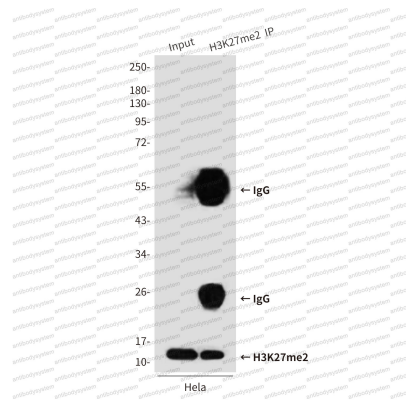
**Note**

For research use only.

**Data Image**

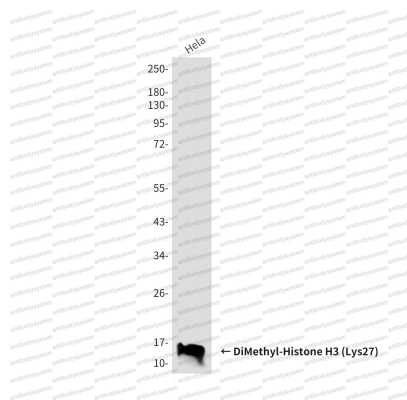
Immunofluorescence

Immunocytochemistry analysis of DiMethyl-Histone H3 (Lys27) in HeLa cells using DiMethyl-Histone H3 (Lys27) antibody.



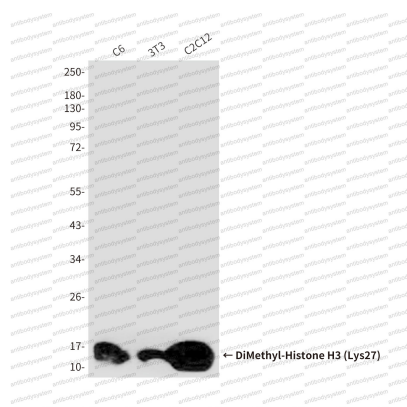
Immunoprecipitation

Immunoprecipitation analysis of DiMethyl-Histone H3 (Lys27) in HeLa lysates using DiMethyl-Histone H3 (Lys27) antibody.



Western blot

Western blot analysis of DiMethyl-Histone H3 (Lys27) in HeLa, rat heart, mouse heart, HUVEC, Jurkat lysates using DiMethyl-Histone H3 (Lys27) antibody.



Western blot

Western blot analysis of DiMethyl-Histone H3 (Lys27) in C6, 3T3, C2C12 lysates using DiMethyl-Histone H3 (Lys27) antibody