

# Anti-DiMethyl-Histone H3 (Lys36) Antibody (R3P52)

## Summary

---

<b>Catalog No.</b>	RHF62751
<b>Clone ID</b>	R3P52
<b>Host species</b>	Mouse
<b>Tested applications</b>	WB: 1:500-1:1000
<b>Species reactivity</b>	Human, Mouse, Rat
<b>Form</b>	Liquid
<b>Storage buffer</b>	0.01M PBS, pH 7.4, 0.5% BSA, 0.05% Sodium Azide and 50% Glycerol.
<b>Concentration</b>	1 mg/ml
<b>Purity</b>	>95% as determined by SDS-PAGE.
<b>Clonality</b>	Monoclonal
<b>Isotype</b>	IgG1
<b>Applications</b>	WB
<b>Target</b>	Histone H3/j, Histone H3/b, Histone H3/d, Histone H3/c, HIST1H3B, H3FH, Histone H3/f, H3FF, H3FK, HIST1H3G, H3FL, H3FB, HIST1H3D, Histone H3/a, H3FI, Histone H3/i, H3FD, HIST1H3A, Histone H3/h, HIST1H3I, HIST1H3E, HIST1H3H, HIST1H3J, H3C1, H3FC HIST1H3C, H3FA, Histone H3.1, H3FJ, Histone H3/l, Histone H3/k, HIST1H3F
<b>Purification</b>	Protein A/G purified from cell culture supernatant.
<b>Endotoxin level</b>	Please contact with the lab for this information.
<b>Accession</b>	P68431

**Stability and Storage**

Use a manual defrost freezer and avoid repeated freeze-thaw cycles.

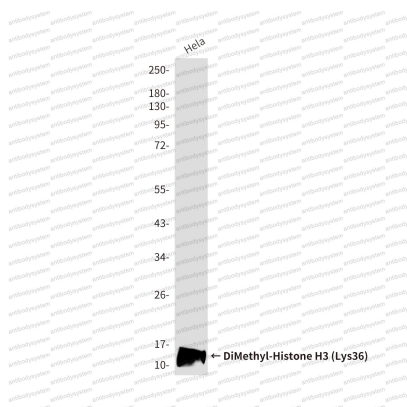
Store at 4°C short term (1-2 weeks). Store at -20°C 12 months. Store at -80°C long term.

**Note**

For research use only.

**Data Image**

---



Western blot

Western blot analysis of DiMethyl-Histone H3 (Lys36) in HeLa lysates using DiMethyl-Histone H3 (Lys36) antibody.