

Anti-TUBA4A Antibody (R3P45)

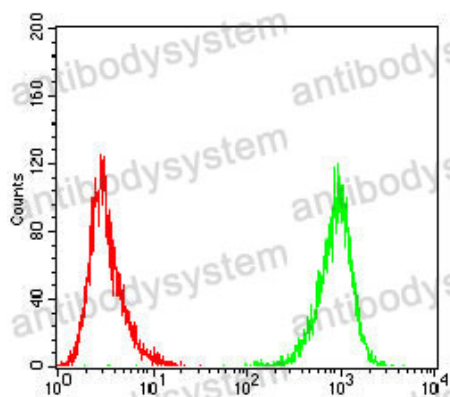
Summary

Catalog No.	RHF62301
Clone ID	R3P45
Host species	Mouse
Tested applications	ELISA: 1:10000, FCM: 1:200-1:400, IHC: 1:200-1:1000, WB: 1:500-1:2000
Species reactivity	Human, Mouse, Rat, Monkey
Form	Liquid
Storage buffer	0.01M PBS, pH 7.4, 0.05% Sodium Azide.
Concentration	1 mg/ml
Purity	>95% as determined by SDS-PAGE.
Clonality	Monoclonal
Isotype	IgG1
Applications	ELISA, FCM, IHC, WB
Target	Tubulin H2-alpha, TUBA4A, TUBA1, Tubulin alpha-4A chain, Testis-specific alpha-tubulin, Tubulin alpha-1 chain, Alpha-tubulin 1
Purification	Protein A/G purified from cell culture supernatant.
Endotoxin level	Please contact with the lab for this information.
Accession	P68366
Stability and Storage	Use a manual defrost freezer and avoid repeated freeze-thaw cycles. Store at 4°C short term (1-2 weeks). Store at -20°C 12 months. Store at -80°C long term.

Note

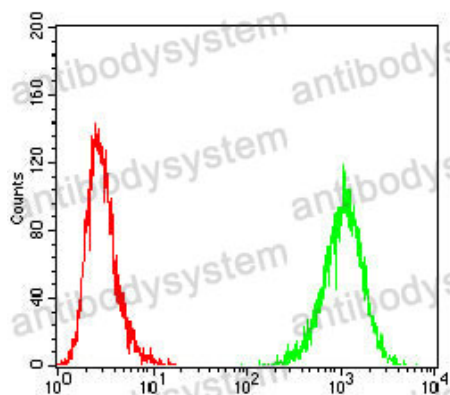
For research use only.

Data Image



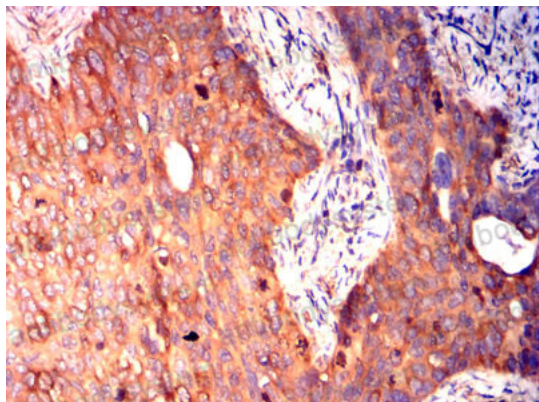
Flow Cytometry

Flow cytometric analysis of A431 cells using TUBA4A mouse mAb (green) and negative control (red).



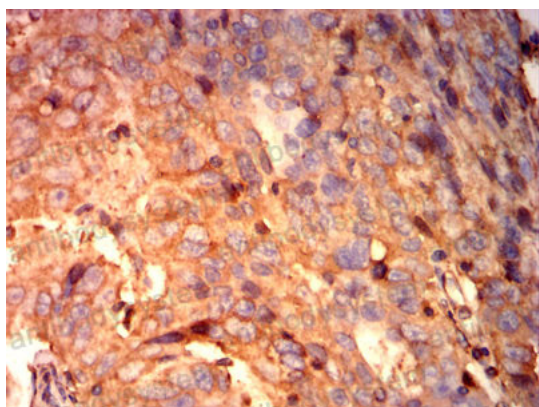
Flow Cytometry

Flow cytometric analysis of Hepg2 cells using TUBA4A mouse mAb (green) and negative control (red).



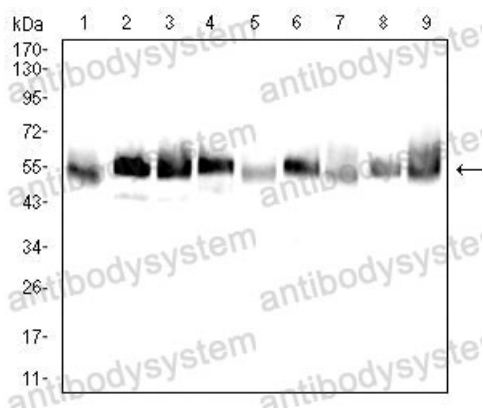
Immunohistochemical

Immunohistochemical analysis of paraffin-embedded human cervical cancer tissues using TUBA4A mouse mAb with DAB staining.



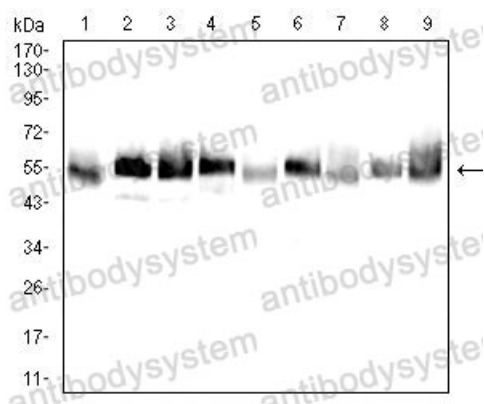
Immunohistochemical

Immunohistochemical analysis of paraffin-embedded human ovarian cancer tissues using TUBA4A mouse mAb with DAB staining.



Western blot

Western blot analysis using TUBA4A mouse mAb against A431 (1), Hela (2), HepG2 (3), Jurkat (4), Cos7 (5), C6 (6), NIH3T3 (7), HEK293 (8), and HEK293-6e (9) cell lysate.



Western blot

Western blot analysis using TUBA4A mouse mAb against A431 (1), Hela (2), HepG2 (3), Jurkat (4), Cos7 (5), C6 (6), NIH3T3 (7), HEK293 (8), and HEK293-6e (9) cell lysate.