

# Anti-Alpha Tubulin Antibody (R3P43)

## Summary

---

<b>Catalog No.</b>	RHF62207
<b>Clone ID</b>	R3P43
<b>Host species</b>	Mouse
<b>Tested applications</b>	IF: 1:50-1:200, IHC: 1:50-1:100, IP: 1:20, WB: 1:500-1:1000
<b>Species reactivity</b>	Human, Mouse, Rat
<b>Form</b>	Liquid
<b>Storage buffer</b>	0.01M PBS, pH 7.4, 0.5% BSA, 0.05% Sodium Azide and 50% Glycerol.
<b>Concentration</b>	1 mg/ml
<b>Purity</b>	>95% as determined by SDS-PAGE.
<b>Clonality</b>	Monoclonal
<b>Isotype</b>	IgG1
<b>Applications</b>	IF, IHC, IP, WB
<b>Target</b>	Tubulin alpha-ubiquitous chain, Tubulin alpha-1B chain, Alpha-tubulin ubiquitous, Tubulin K-alpha-1, TUBA1B
<b>Purification</b>	Protein A/G purified from cell culture supernatant.
<b>Endotoxin level</b>	Please contact with the lab for this information.
<b>Accession</b>	P68363
<b>Stability and Storage</b>	Use a manual defrost freezer and avoid repeated freeze-thaw cycles. Store at 4°C short term (1-2 weeks). Store at -20°C 12 months. Store at -80°C long term.

**Note**

For research use only.

## Data Image



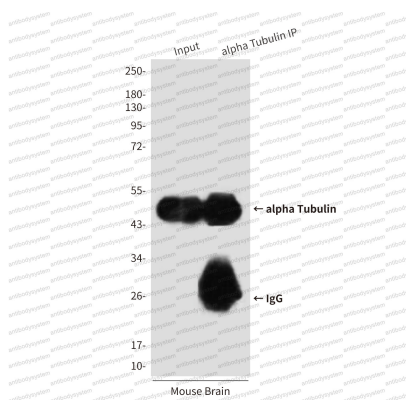
Immunofluorescence analysis of alpha Tubulin in Hela using alpha Tubulin antibody (Left) ,and DAPI (blue).

Immunofluorescence



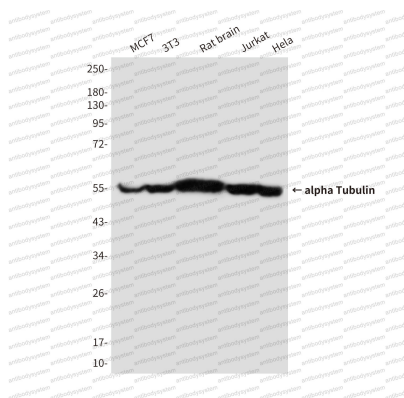
Immunohistochemistry analysis of paraffin-embedded Human Colon carcinoma using alpha tubulin antibody. High-pressure and temperature Sodium Citrate pH 6.0 was used for antigen retrieval.

Immunohistochemical



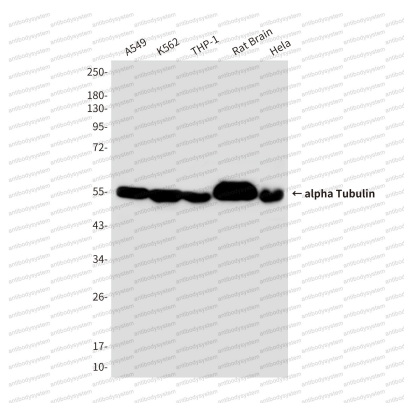
Immunoprecipitation analysis of alpha Tubulin in mouse Brain Tissue lysates using alpha Tubulin antibody.

Immunoprecipitation



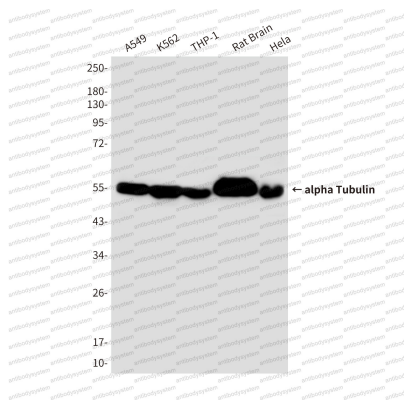
Western blot

Western blot analysis of alpha Tubulin in MCF-7, 3T3, rat Brain, Jurkat and Hela lysates using alpha tubulin antibody.



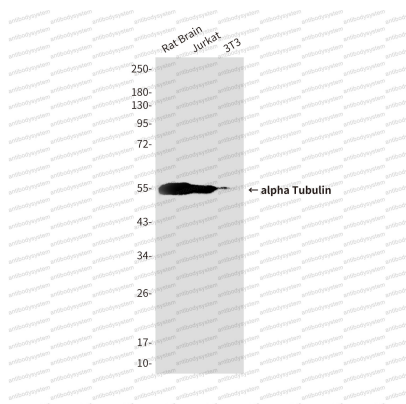
Western blot

Western blot analysis of alpha Tubulin in A549, K562, THP-1, rat Brain, Hela lysates using alpha Tubulin antibody.



Western blot

Western blot analysis of alpha Tubulin in A549, K562, THP-1, rat Brain, Hela lysates using alpha Tubulin antibody.



Western blot

Western blot analysis of alpha Tubulin in rat brain , Jurkat, 3T3 lysates using alpha Tubulin antibody.