

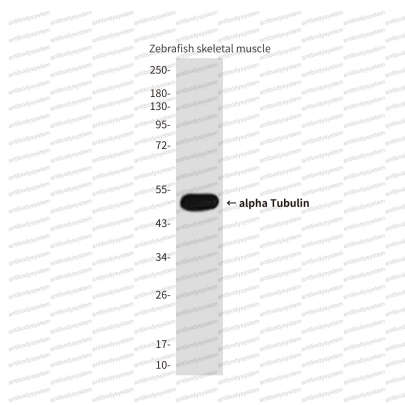
Anti-Alpha Tubulin Antibody (R3P42)

Summary

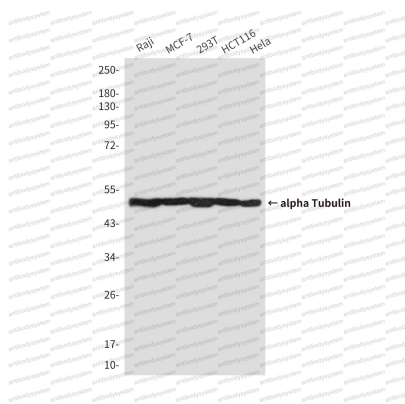
Catalog No.	RWF62201
Clone ID	R3P42
Host species	Mouse
Tested applications	WB: 1:500-1:1000
Species reactivity	Zebrafish
Form	Liquid
Storage buffer	0.01M PBS, pH 7.4, 0.5% BSA, 0.05% Sodium Azide and 50% Glycerol.
Concentration	1 mg/ml
Purity	>95% as determined by SDS-PAGE.
Clonality	Monoclonal
Isotype	IgG1
Applications	WB
Target	Tubulin alpha-ubiquitous chain, Tubulin alpha-1B chain, Alpha-tubulin ubiquitous, Tubulin K-alpha-1, TUBA1B
Purification	Protein A/G purified from cell culture supernatant.
Endotoxin level	Please contact with the lab for this information.
Accession	Q6NWK7
Stability and Storage	Use a manual defrost freezer and avoid repeated freeze-thaw cycles. Store at 4°C short term (1-2 weeks). Store at -20°C 12 months. Store at -80°C long term.

Note

For research use only.

Data Image**Western blot**

Western blot analysis of alpha Tubulin in Zebrafish skeletal muscle(Zebrafish Specific) using alpha Tubulin antibody.

**Western blot**

Western blot analysis of alpha Tubulin (Zebrafish Specific) in Raji, MCF-7, 293T, HCT116, Hela lysates using α Tubulin (Zebrafish Specific) antibody.