

# Anti-TUBA1B/Alpha Tubulin Antibody (R3P40)

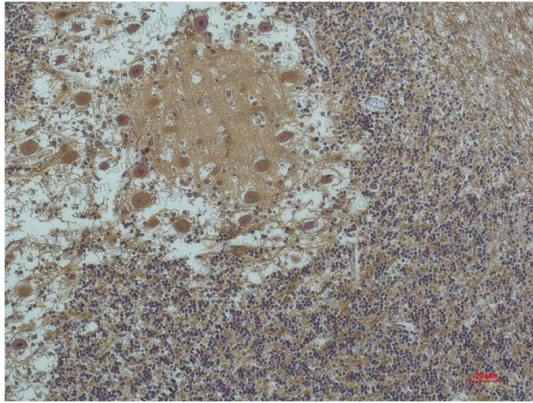
## Summary

---

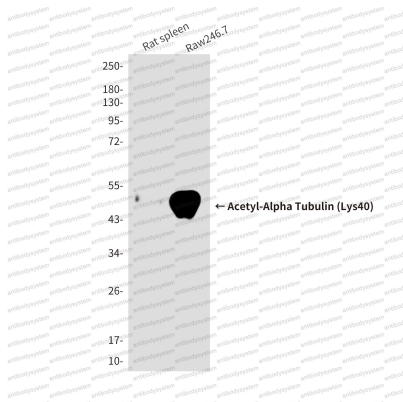
<b>Catalog No.</b>	RHF62205
<b>Clone ID</b>	R3P40
<b>Host species</b>	Mouse
<b>Tested applications</b>	IHC: 1:50-1:100, WB: 1:500-1:1000
<b>Species reactivity</b>	Human, Mouse, Rat
<b>Form</b>	Liquid
<b>Storage buffer</b>	0.01M PBS, pH 7.4, 0.5% BSA, 0.05% Sodium Azide and 50% Glycerol.
<b>Concentration</b>	1 mg/ml
<b>Purity</b>	>95% as determined by SDS-PAGE.
<b>Clonality</b>	Monoclonal
<b>Isotype</b>	IgG1
<b>Applications</b>	IHC, WB
<b>Target</b>	Tubulin alpha-ubiquitous chain, Tubulin alpha-1B chain, Alpha-tubulin ubiquitous, Tubulin K-alpha-1, TUBA1B
<b>Purification</b>	Protein A/G purified from cell culture supernatant.
<b>Endotoxin level</b>	Please contact with the lab for this information.
<b>Accession</b>	P68363
<b>Stability and Storage</b>	Use a manual defrost freezer and avoid repeated freeze-thaw cycles. Store at 4°C short term (1-2 weeks). Store at -20°C 12 months. Store at -80°C long term.

**Note**

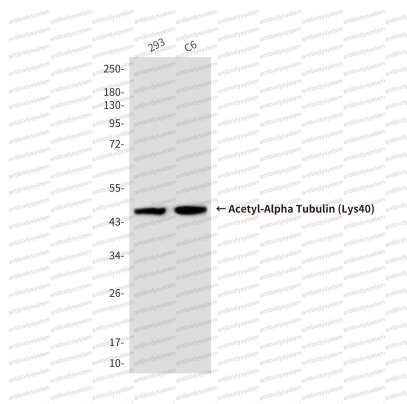
For research use only.

**Data Image****Immunohistochemical**

Immunohistochemistry analysis of paraffin-embedded Human Brain Tissue using  $\alpha$ -tubulin(Acetyl Lys4) antibody. High-pressure and temperature Sodium Citrate pH 6.0 was used for antigen retrieval.

**Western blot**

Western blot analysis of Acetyl- $\alpha$ -Tubulin (Lys40) in rat spleen, Raw246.7 lysates using Acetyl- $\alpha$ -Tubulin (Lys40) antibody.



Western blot

Western blot analysis of AcetylAlpha Tubulin (Lys40) in 293, C6 lysates using Acetyl- $\alpha$ -Tubulin (Lys40) antibody.