

Anti-Alpha Tubulin Antibody (R3P39)

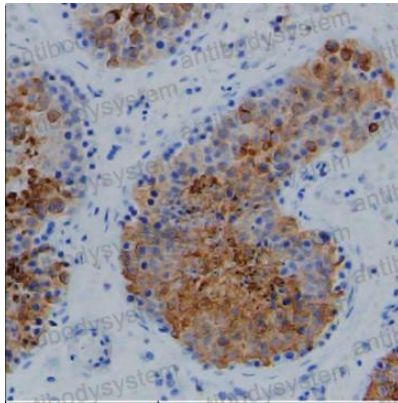
Summary

Catalog No.	RHF62204
Clone ID	R3P39
Host species	Mouse
Tested applications	IHC: 1:500, IP: 1:100-1:200, WB: 1:500-1:1000
Species reactivity	Human
Form	Liquid
Storage buffer	0.01M PBS, pH 7.4, 0.05% Sodium Azide.
Concentration	1 mg/ml
Purity	>95% as determined by SDS-PAGE.
Clonality	Monoclonal
Isotype	IgG2b
Applications	IHC, IP, WB
Target	Tubulin alpha-ubiquitous chain, Tubulin alpha-1B chain, Alpha-tubulin ubiquitous, Tubulin K-alpha-1, TUBA1B
Purification	Protein A/G purified from cell culture supernatant.
Endotoxin level	Please contact with the lab for this information.
Accession	P68363, Q71U36
Stability and Storage	Use a manual defrost freezer and avoid repeated freeze-thaw cycles. Store at 4°C short term (1-2 weeks). Store at -20°C 12 months. Store at -80°C long term.

Note

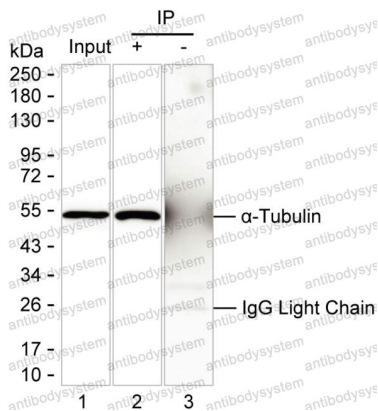
For research use only.

Data Image



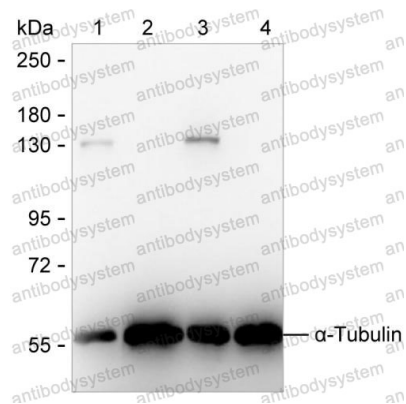
Immunohistochemical

IHC-P analysis of testis tissue by TUBA4A antibody (RHF62204). IHC-P was performed using sections of the formalin-fixed paraffin-embedded testis tissue; Result: Cells in seminiferous ducts and Leydig cells are positively stained at cytoplasm and cell membrane.



Immunoprecipitation

Lane 1: Hep G2 lysate; Lane 2: TUBA4A immunoprecipitated from Hep G2 lysate by RHF62204; Lane 3: The same as Lane 2 but use IgG isotype control antibody; Result: RHF62204 can immunoprecipitate TUBA4A;



Western blot

Lane 1: 15 μ g of A431 lysate; Lane 2: 15 μ g of U-251MG lysate; Lane 3: 15 μ g of HeLa lysate; Lane 4: 15 μ g of Hep G2 lysate; Result: RHF62204 can detect α -Tubulin by Western blotting.