

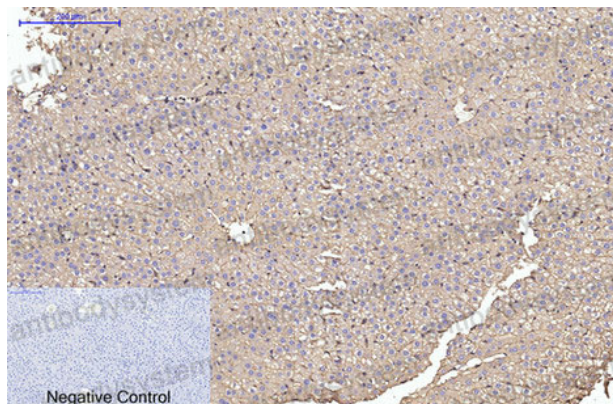
# Anti-ACTA1 Antibody (R3P37)

## Summary

---

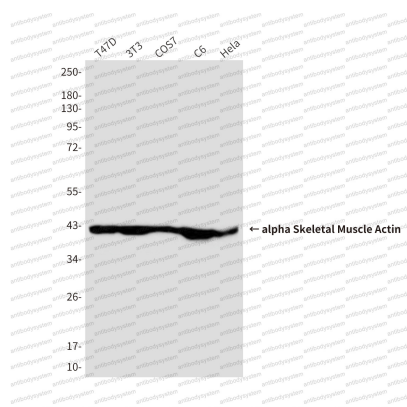
<b>Catalog No.</b>	RHF62108
<b>Clone ID</b>	R3P37
<b>Host species</b>	Mouse
<b>Tested applications</b>	IF: 1:50-1:200, IHC: 1:50-1:100, IP: 1:20, WB: 1:500-1:1000
<b>Species reactivity</b>	Human, Mouse, Rat
<b>Form</b>	Liquid
<b>Storage buffer</b>	0.01M PBS, pH 7.4, 0.5% BSA, 0.05% Sodium Azide and 50% Glycerol.
<b>Concentration</b>	1 mg/ml
<b>Purity</b>	>95% as determined by SDS-PAGE.
<b>Clonality</b>	Monoclonal
<b>Isotype</b>	IgG
<b>Applications</b>	IF, IHC, IP, WB
<b>Target</b>	ACTA1, Alpha-actin-1, ACTA, Actin, alpha skeletal muscle
<b>Purification</b>	Protein A/G purified from cell culture supernatant.
<b>Endotoxin level</b>	Please contact with the lab for this information.
<b>Accession</b>	P68133
<b>Stability and Storage</b>	Use a manual defrost freezer and avoid repeated freeze-thaw cycles. Store at 4°C short term (1-2 weeks). Store at -20°C 12 months. Store at -80°C long term.
<b>Note</b>	For research use only.

## Data Image



Immunohistochemical

Immunohistochemistry analysis of paraffin-embedded rat liver tissue using alpha Skeletal Muscle Actin antibody. High-pressure and temperature Sodium Citrate pH 6.0 was used for antigen retrieval. Negative control was used by secondary antibody only.



Western blot

Western blot analysis of alpha Skeletal Muscle Actin in T47D, 3T3, COS7, C6 and Hela lysates using alpha Skeletal Muscle Actin antibody