

Anti-ACTG2 Antibody (R3P33)

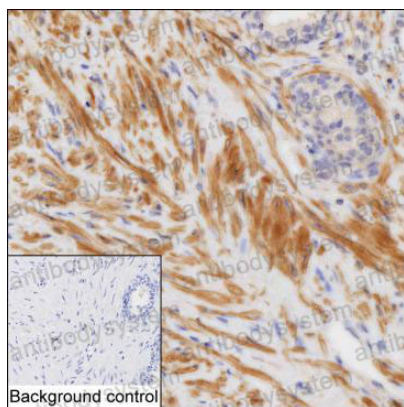
Summary

Catalog No.	RHF60601
Clone ID	R3P33
Host species	Mouse
Tested applications	IHC: 1:500-1:1000
Species reactivity	Human
Form	Liquid
Storage buffer	0.01M PBS, pH 7.4, 0.05% Sodium Azide.
Concentration	1 mg/ml
Purity	>95% as determined by SDS-PAGE.
Clonality	Monoclonal
Isotype	IgG1
Applications	IHC
Target	Smooth muscle gamma-actin, Gamma-2-actin, ACTG2, ACTSG, ACTL3, ACTA3, Actin, gamma-enteric smooth muscle, Alpha-actin-3
Purification	Protein A/G purified from cell culture supernatant.
Endotoxin level	Please contact with the lab for this information.
Accession	P63267
Stability and Storage	Use a manual defrost freezer and avoid repeated freeze-thaw cycles. Store at 4°C short term (1-2 weeks). Store at -20°C 12 months. Store at -80°C long term.

Note

For research use only.

Data Image



Immunohistochemical

IHC-P analysis of prostate tissue by ACTG2 antibody (RHF60601). IHC-P was performed using sections of the formalin-fixed paraffin-embedded prostate tissue; Result: Smooth muscle cells are positively stained at the cytoplasm.