

Anti-SKP1 Antibody (R3P30)

Summary

Catalog No.	RHF59703
Clone ID	R3P30
Host species	Mouse
Tested applications	ELISA: 1:10000, FCM: 1:200-1:400, IHC: 1:200-1:1000, WB: 1:500-1:2000
Species reactivity	Human
Form	Liquid
Storage buffer	0.01M PBS, pH 7.4, 0.05% Sodium Azide.
Concentration	1 mg/ml
Purity	>95% as determined by SDS-PAGE.
Clonality	Monoclonal
Isotype	IgG1
Applications	ELISA, FCM, IHC, WB
Target	p19A, Organ of Corti protein 2, EMC19, SKP1, Organ of Corti protein II, OCP2, OCP-2, RNA polymerase II elongation factor-like protein, Cyclin-A/CDK2-associated protein p19, OCP-II, p19skp1, TCEB1L, S-phase kinase-associated protein 1, SIII, Transcription elongation factor B polypeptide 1-like, SKP1A
Purification	Protein A/G purified from cell culture supernatant.
Endotoxin level	Please contact with the lab for this information.
Accession	P63208

Stability and Storage

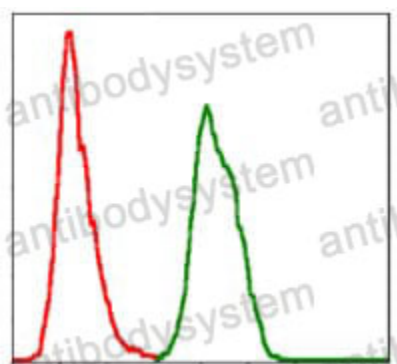
Use a manual defrost freezer and avoid repeated freeze-thaw cycles.

Store at 4°C short term (1-2 weeks). Store at -20°C 12 months. Store at -80°C long term.

Note

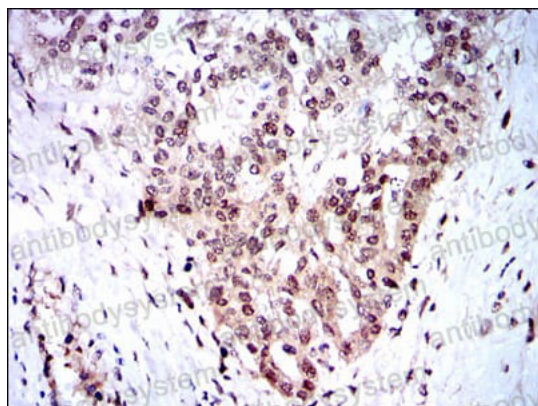
For research use only.

Data Image



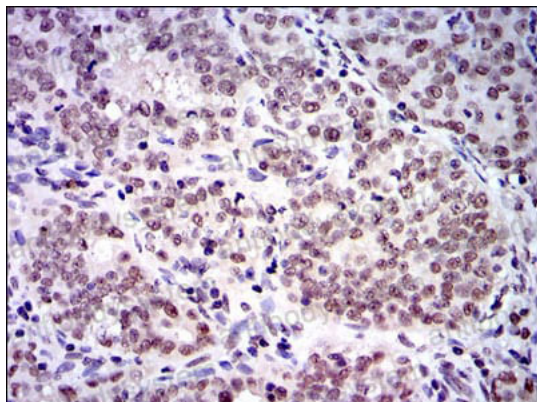
Flow Cytometry

Flow cytometric analysis of Hela cells using SKP1 mouse mAb (green) and negative control (red).



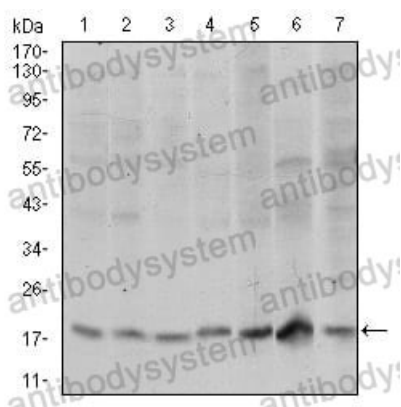
Immunohistochemical

Immunohistochemical analysis of paraffin-embedded human ovarian cancer tissues using SKP1 mouse mAb with DAB staining.



Immunohistochemical

Immunohistochemical analysis of paraffin-embedded human cervical cancer tissues using SKP1 mouse mAb with DAB staining.



Western blot

Western blot analysis using SKP1 mouse mAb against Hela (1), RAJI (2), Jurkat (3), MCF-7 (4), HepG2 (5), PC-12 (6) and Cos7 (7) cell lysate.