

Anti-SKP1 Antibody (R3P29)

Summary

Catalog No.	RHF59702
Clone ID	R3P29
Host species	Mouse
Tested applications	ELISA: 1:10000, FCM: 1:200-1:400, IF: 1:200-1:1000, IHC: 1:200-1:1000, WB: 1:500-1:2000
Species reactivity	Human
Form	Liquid
Storage buffer	0.01M PBS, pH 7.4, 0.05% Sodium Azide.
Concentration	1 mg/ml
Purity	>95% as determined by SDS-PAGE.
Clonality	Monoclonal
Isotype	IgG1
Applications	ELISA, FCM, IF, IHC, WB
Target	p19A, Organ of Corti protein 2, EMC19, SKP1, Organ of Corti protein II, OCP2, OCP-2, RNA polymerase II elongation factor-like protein, Cyclin-A/CDK2-associated protein p19, OCP-II, p19skp1, TCEB1L, S-phase kinase-associated protein 1, SIII, Transcription elongation factor B polypeptide 1-like, SKP1A
Purification	Protein A/G purified from cell culture supernatant.
Endotoxin level	Please contact with the lab for this information.
Accession	P63208

Stability and Storage

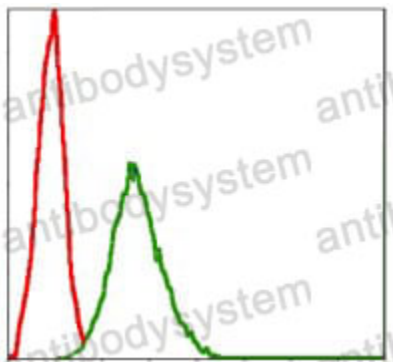
Use a manual defrost freezer and avoid repeated freeze-thaw cycles.

Store at 4°C short term (1-2 weeks). Store at -20°C 12 months. Store at -80°C long term.

Note

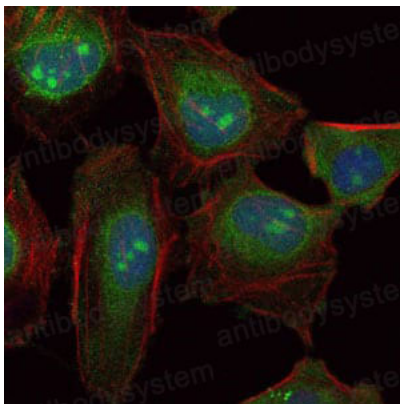
For research use only.

Data Image



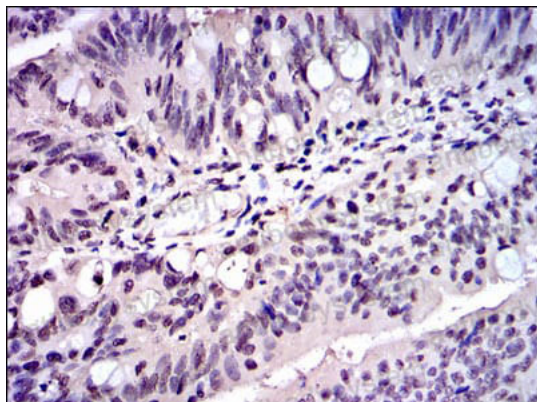
Flow Cytometry

Flow cytometric analysis of NIH/3T3 cells using SKP1 mouse mAb (green) and negative control (red).



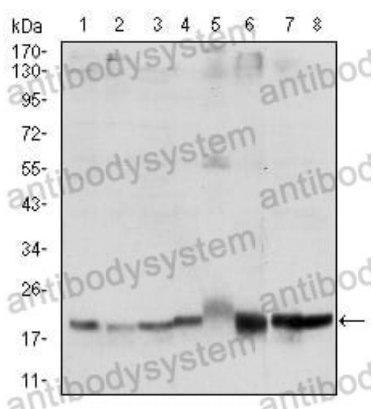
Immunofluorescence

Immunofluorescence analysis of HeLa cells using SKP1 mouse mAb (green). Blue: DRAQ5 fluorescent DNA dye. Red: Actin filaments have been labeled with Alexa Fluor-555 phalloidin.



Immunohistochemical

Immunohistochemical analysis of paraffin-embedded human rectum cancer tissues using SKP1 mouse mAb with DAB staining.



Western blot

Western blot analysis using SKP1 mouse mAb against Hela (1), NIH/3T3 (2), A431 (3), RAJI (4), PC-12 (5), Cos7 (6), MCF-7 (7) and HepG2 (8) cell lysate.