

# Anti-GRB2 Antibody (R3P25)

## Summary

---

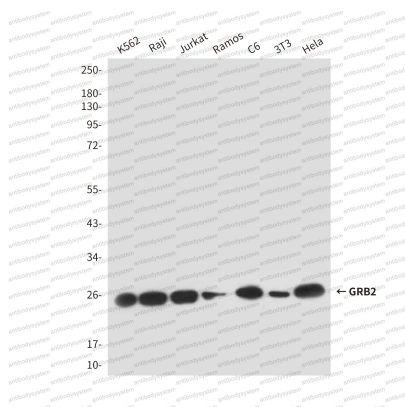
<b>Catalog No.</b>	RHF56303
<b>Clone ID</b>	R3P25
<b>Host species</b>	Mouse
<b>Tested applications</b>	WB: 1:500-1:1000
<b>Species reactivity</b>	Human, Mouse, Rat
<b>Form</b>	Liquid
<b>Storage buffer</b>	0.01M PBS, pH 7.4, 0.5% BSA, 0.05% Sodium Azide and 50% Glycerol.
<b>Concentration</b>	1 mg/ml
<b>Purity</b>	>95% as determined by SDS-PAGE.
<b>Clonality</b>	Monoclonal
<b>Isotype</b>	IgG1
<b>Applications</b>	WB
<b>Target</b>	Protein Ash, GRB2, Growth factor receptor-bound protein 2, SH2/SH3 adapter GRB2, ASH, Adapter protein GRB2
<b>Purification</b>	Protein A/G purified from cell culture supernatant.
<b>Endotoxin level</b>	Please contact with the lab for this information.
<b>Accession</b>	P62993
<b>Stability and Storage</b>	Use a manual defrost freezer and avoid repeated freeze-thaw cycles. Store at 4°C short term (1-2 weeks). Store at -20°C 12 months. Store at -80°C long term.

**Note**

For research use only.

**Data Image**

---

**Western blot**

Western blot analysis of GRB2 in K562, Raji, Jurkat, Ramos, C6, 3T3 and Hela lysates using GRB2 antibody.