

Anti-HIST2H4A (20Me3) Antibody (R3P19)

Summary

Catalog No.	RHF53207
Clone ID	R3P19
Host species	Mouse
Tested applications	ELISA: 1:10000, FCM: 1:200-1:400, WB: 1:500-1:2000
Species reactivity	Human, Mouse, Rat
Form	Liquid
Storage buffer	0.01M PBS, pH 7.4, 0.05% Sodium Azide.
Concentration	1 mg/ml
Purity	>95% as determined by SDS-PAGE.
Clonality	Monoclonal
Isotype	IgG1
Applications	ELISA, FCM, WB
Target	HIST1H4D, HIST2H4A, H4FE, H4FO, H4/D, H4/A, HIST1H4E, HIST1H4F, H4FG, HIST1H4L, H4FD, H4/H, HIST1H4B, HIST1H4I, H4FN, HIST1H4C, H4FI, H4FC, H4/C, H4/E, Histone H4, H4/G, H4/O, H4FB, H4FK, H4/M, H4/B, H4C1, HIST2H4, H4F2, HIST2H4B, HIST1H4A, HIST1H4J, H4/N, H4FH, H4/I, H4/J, H4/K, H4FJ, HIST1H4H, HIST1H4K, HIST4H4, H4FM, H4FA
Purification	Protein A/G purified from cell culture supernatant.
Endotoxin level	Please contact with the lab for this information.
Accession	P62805

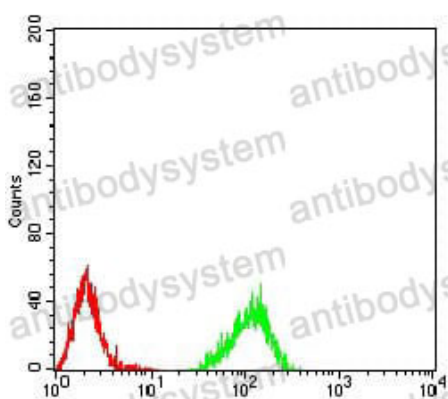
Stability and Storage

Use a manual defrost freezer and avoid repeated freeze-thaw cycles.

Store at 4°C short term (1-2 weeks). Store at -20°C 12 months. Store at -80°C long term.

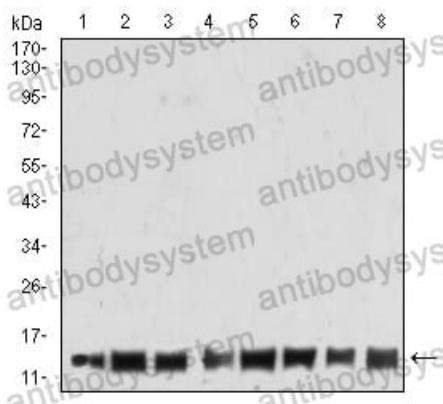
Note

For research use only.

Data Image

Flow Cytometry

Flow cytometric analysis of Raji cells using HIST2H4A(20Me3) mouse mAb (green) and negative control (red).



Western blot

Western blot analysis using HIST2H4A(20Me3) mouse mAb against THP-1 (1), Jurkat (2), K562 (3), NIT/3T3 (4), PC-12 (5), Hela (6), MCF-7 (7), and A431 (8) cell lysate.