

Anti-HIST2H4A (20Me) Antibody (R3P18)

Summary

Catalog No.	RHF53206
Clone ID	R3P18
Host species	Mouse
Tested applications	ELISA: 1:10000, IF: 1:200-1:1000, IHC: 1:200-1:1000
Species reactivity	Human
Form	Liquid
Storage buffer	0.01M PBS, pH 7.4, 0.05% Sodium Azide.
Concentration	1 mg/ml
Purity	>95% as determined by SDS-PAGE.
Clonality	Monoclonal
Isotype	IgG1
Applications	ELISA, IF, IHC
Target	HIST1H4D, HIST2H4A, H4FE, H4FO, H4/D, H4/A, HIST1H4E, HIST1H4F, H4FG, HIST1H4L, H4FD, H4/H, HIST1H4B, HIST1H4I, H4FN, HIST1H4C, H4FI, H4FC, H4/C, H4/E, Histone H4, H4/G, H4/O, H4FB, H4FK, H4/M, H4/B, H4C1, HIST2H4, H4F2, HIST2H4B, HIST1H4A, HIST1H4J, H4/N, H4FH, H4/I, H4/J, H4/K, H4FJ, HIST1H4H, HIST1H4K, HIST4H4, H4FM, H4FA
Purification	Protein A/G purified from cell culture supernatant.
Endotoxin level	Please contact with the lab for this information.
Accession	P62805

Stability and Storage

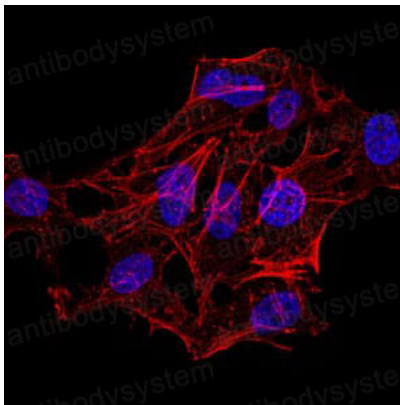
Use a manual defrost freezer and avoid repeated freeze-thaw cycles.

Store at 4°C short term (1-2 weeks). Store at -20°C 12 months. Store at -80°C long term.

Note

For research use only.

Data Image



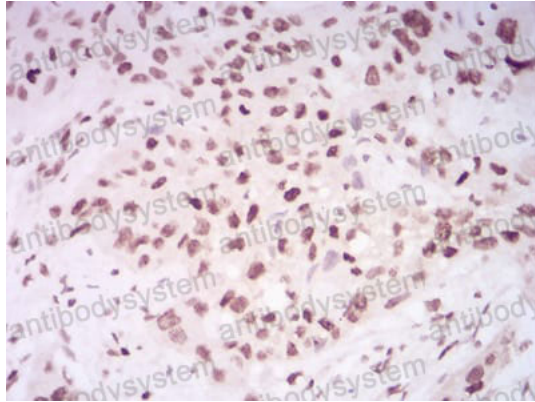
Immunofluorescence

Immunofluorescence analysis of HeLa cells . Blue: DRAQ5 fluorescent DNA dye. Red: Actin filaments have been labeled with Alexa Fluor- 555 phalloidin.



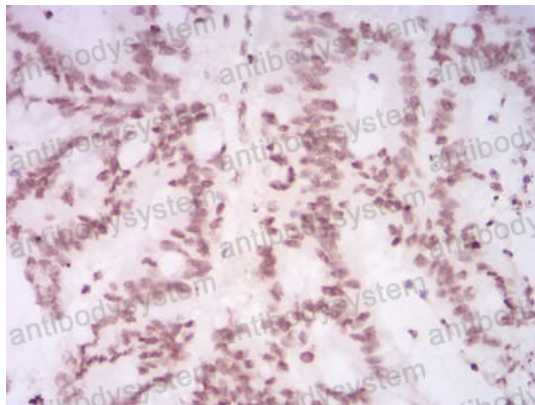
Immunofluorescence

Immunofluorescence analysis of HeLa cells using HIST2H4A(20Me) mouse mAb (green). Blue: DRAQ5 fluorescent DNA dye. Red: Actin filaments have been labeled with Alexa Fluor- 555 phalloidin.



Immunohistochemical

Immunohistochemical analysis of paraffin-embedded human esophageal cancer tissues using HIST2H4A(20Me) mouse mAb with DAB staining.



Immunohistochemical

Immunohistochemical analysis of paraffin-embedded human colon cancer tissues using HIST2H4A(20Me) mouse mAb with DAB staining.