

Anti-HIST2H4A (20Me) Antibody (R3P17)

Summary

Catalog No.	RHF53205
Clone ID	R3P17
Host species	Mouse
Tested applications	ELISA: 1:10000, FCM: 1:200-1:400, IF: 1:200-1:1000, IHC: 1:200-1:1000, WB: 1:500-1:2000
Species reactivity	Human
Form	Liquid
Storage buffer	0.01M PBS, pH 7.4, 0.05% Sodium Azide.
Concentration	1 mg/ml
Purity	>95% as determined by SDS-PAGE.
Clonality	Monoclonal
Isotype	IgG1
Applications	ELISA, FCM, IF, IHC, WB
Target	HIST1H4D, HIST2H4A, H4FE, H4FO, H4/D, H4/A, HIST1H4E, HIST1H4F, H4FG, HIST1H4L, H4FD, H4/H, HIST1H4B, HIST1H4I, H4FN, HIST1H4C, H4FI, H4FC, H4/C, H4/E, Histone H4, H4/G, H4/O, H4FB, H4FK, H4/M, H4/B, H4C1, HIST2H4, H4F2, HIST2H4B, HIST1H4A, HIST1H4J, H4/N, H4FH, H4/I, H4/J, H4/K, H4FJ, HIST1H4H, HIST1H4K, HIST4H4, H4FM, H4FA
Purification	Protein A/G purified from cell culture supernatant.
Endotoxin level	Please contact with the lab for this information.

Recombinant Proteins & Antibodies

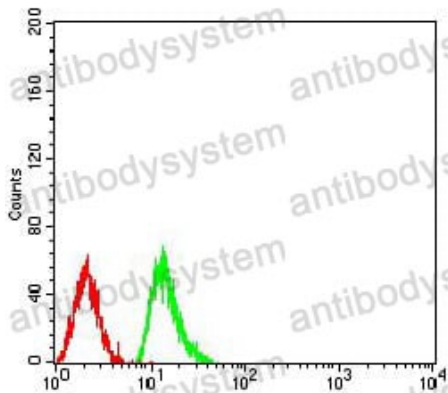
Accession P62805

Use a manual defrost freezer and avoid repeated freeze-thaw cycles.

Stability and Storage Store at 4°C short term (1-2 weeks). Store at -20°C 12 months. Store at -80°C long term.

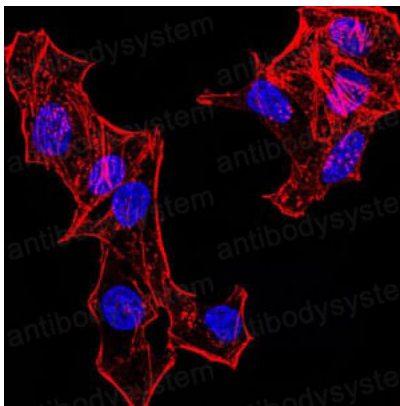
Note For research use only.

Data Image



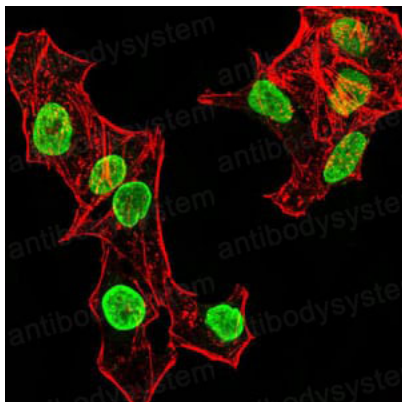
Flow Cytometry

Flow cytometric analysis of Raji cells using HIST2H4A(20Me) mouse mAb (green) and negative control (red).



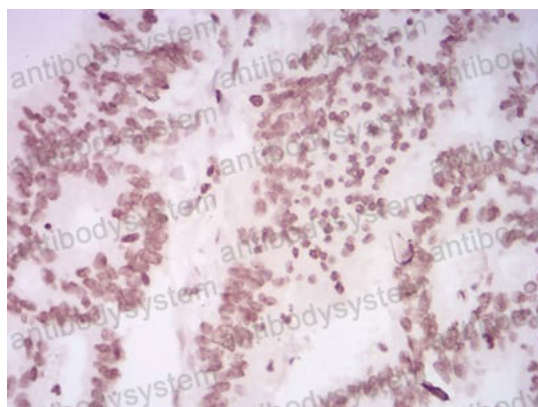
Immunofluorescence

Immunofluorescence analysis of HeLa cells. Blue: DRAQ5 fluorescent DNA dye. Red: Actin filaments have been labeled with Alexa Fluor-555 phalloidin.



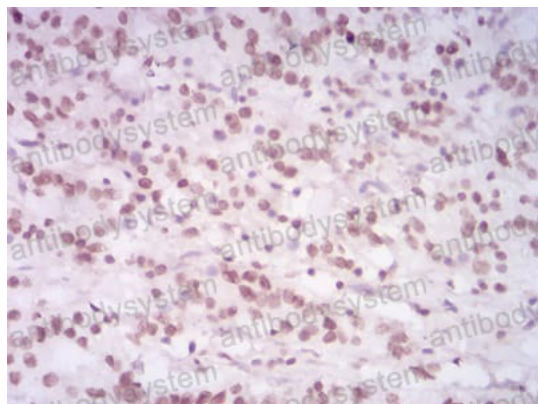
Immunofluorescence

Immunofluorescence analysis of HeLa cells using HIST2H4A(20Me) mouse mAb (green). Blue: DRAQ5 fluorescent DNA dye. Red: Actin filaments have been labeled with Alexa Fluor- 555 phalloidin.



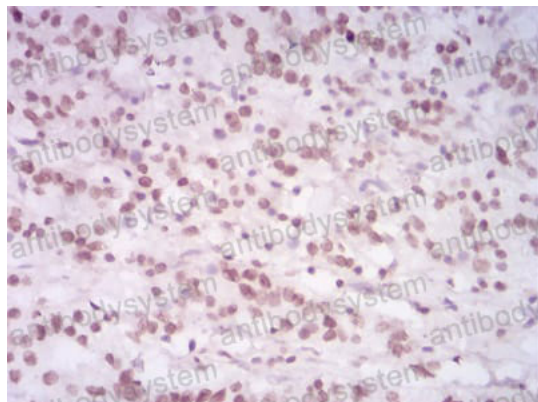
Immunohistochemical

Immunohistochemical analysis of paraffin-embedded human rectum cancer tissues using HIST2H4A(20Me) mouse mAb with DAB staining.



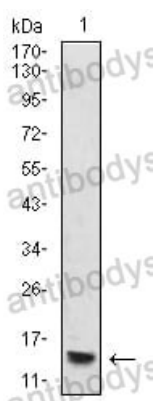
Immunohistochemical

Immunohistochemical analysis of paraffin-embedded human stomach cancer tissues using HIST2H4A(20Me) mouse mAb with DAB staining.



Immunohistochemical

Immunohistochemical analysis of paraffin-embedded human stomach cancer tissues using HIST2H4A(20Me) mouse mAb with DAB staining.



Western blot

Western blot analysis using HIST2H4A(20Me) mouse mAb against THP-1 (1) cell lysate.