

Anti-RPS6 Antibody (R3P16)

Summary

Catalog No.	RHF53002
Clone ID	R3P16
Host species	Mouse
Tested applications	IF: 1:50-1:200, IP: 1:20, WB: 1:500-1:1000
Species reactivity	Human, Mouse, Rat, Monkey
Form	Liquid
Storage buffer	0.01M PBS, pH 7.4, 0.5% BSA, 0.05% Sodium Azide and 50% Glycerol.
Concentration	1 mg/ml
Purity	>95% as determined by SDS-PAGE.
Clonality	Monoclonal
Isotype	IgG1
Applications	IF, IP, WB
Target	40S ribosomal protein S6, Phosphoprotein NP33, RPS6, Small ribosomal subunit protein eS6
Purification	Protein A/G purified from cell culture supernatant.
Endotoxin level	Please contact with the lab for this information.
Accession	P62753
Stability and Storage	Use a manual defrost freezer and avoid repeated freeze-thaw cycles. Store at 4°C short term (1-2 weeks). Store at -20°C 12 months. Store at -80°C long term.

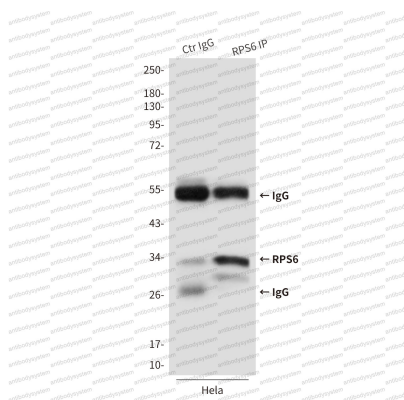
Note For research use only.

Data Image



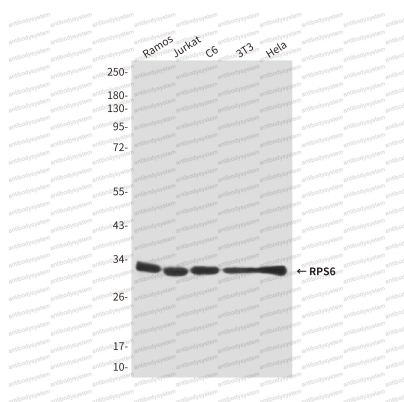
Immunocytochemistry analysis of RPS6 in HeLa using S6 Ribosomal Protein antibody.

Immunofluorescence



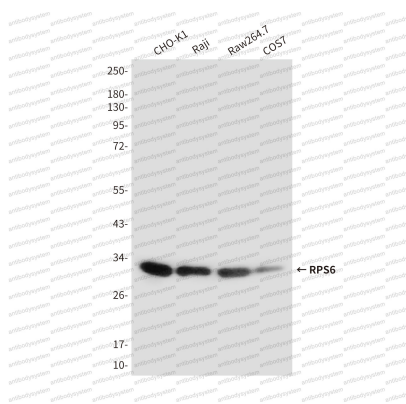
Immunoprecipitation analysis of RPS6 in HeLa lysates using S6 Ribosomal Protein antibody.

Immunoprecipitation



Western blot analysis of S6 Ribosomal Protein in Ramos, Jurkat, C6, 3T3 and HeLa lysates using S6 Ribosomal Protein antibody.

Western blot



Western blot

Western blot analysis of RPS6 in CHO-K1, Raji, Raw264.7 and COS7 lysates using RPS6 antibody