

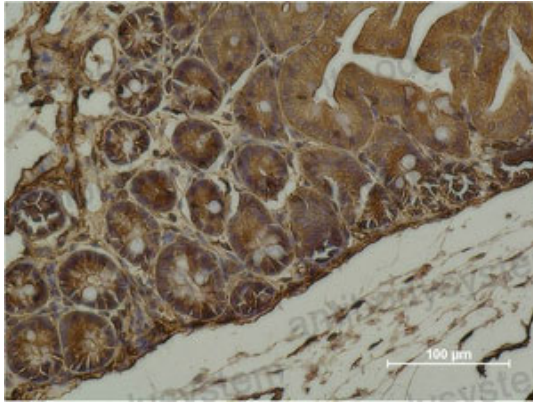
Anti-SMA/ACTA2 Antibody (R3P15)

Summary

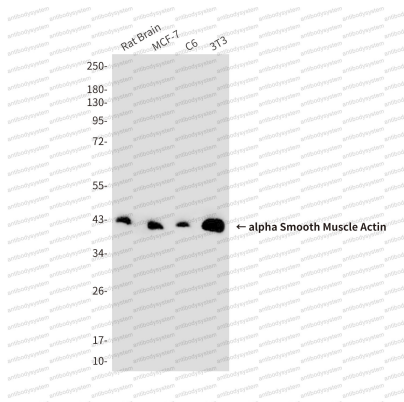
Catalog No.	RHF52708
Clone ID	R3P15
Host species	Mouse
Tested applications	IF: 1:50-1:200, IHC: 1:50-1:100, WB: 1:500-1:1000
Species reactivity	Human, Mouse, Rat
Form	Liquid
Storage buffer	0.01M PBS, pH 7.4, 0.5% BSA, 0.05% Sodium Azide and 50% Glycerol.
Concentration	1 mg/ml
Purity	>95% as determined by SDS-PAGE.
Clonality	Monoclonal
Isotype	IgG1
Applications	IF, IHC, WB
Target	Alpha-actin-2, Actin, aortic smooth muscle, Cell growth-inhibiting gene 46 protein, ACTSA, ACTVS, ACTA2
Purification	Protein A/G purified from cell culture supernatant.
Endotoxin level	Please contact with the lab for this information.
Accession	P62736
Stability and Storage	Use a manual defrost freezer and avoid repeated freeze-thaw cycles. Store at 4°C short term (1-2 weeks). Store at -20°C 12 months. Store at -80°C long term.

Note

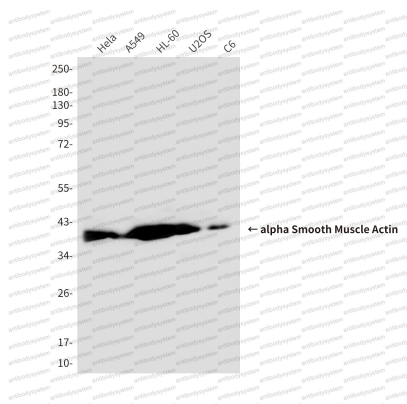
For research use only.

Data Image**Immunohistochemical**

Immunohistochemistry analysis of paraffin-embedded mouse Cecal Tissue using alpha Smooth Muscle Actin antibody. High-pressure and temperature Sodium Citrate pH 6.0 was used for antigen retrieval.

**Western blot**

Western blot analysis of alpha Smooth Muscle Actin in α Smooth Muscle Actin in rat Brain, MCF-7, C6 and 3T3 lysates using alpha Smooth Muscle Actin antibody



Western blot

Western blot analysis of alpha Smooth Muscle Actin in Hela, A549, HL6, U2OS, C6 lysates using alpha Smooth Muscle Actin antibody