

Anti-SMA/ACTA2 Antibody (R3P13)

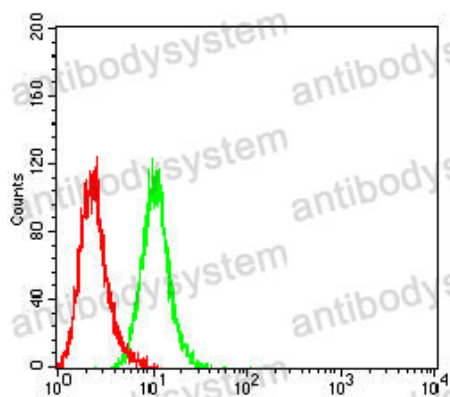
Summary

Catalog No.	RHF52706
Clone ID	R3P13
Host species	Mouse
Tested applications	ELISA: 1:10000, FCM: 1:200-1:400, IHC: 1:200-1:1000, WB: 1:500-1:2000
Species reactivity	Human, Mouse, Rat
Form	Liquid
Storage buffer	0.01M PBS, pH 7.4, 0.05% Sodium Azide.
Concentration	1 mg/ml
Purity	>95% as determined by SDS-PAGE.
Clonality	Monoclonal
Isotype	IgG1
Applications	ELISA, FCM, IHC, WB
Target	Alpha-actin-2, Actin, aortic smooth muscle, Cell growth-inhibiting gene 46 protein, ACTSA, ACTVS, ACTA2
Purification	Protein A/G purified from cell culture supernatant.
Endotoxin level	Please contact with the lab for this information.
Accession	P62736
Stability and Storage	Use a manual defrost freezer and avoid repeated freeze-thaw cycles. Store at 4°C short term (1-2 weeks). Store at -20°C 12 months. Store at -80°C long term.

Note

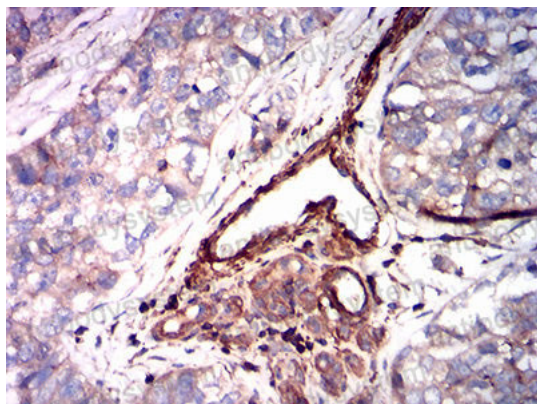
For research use only.

Data Image



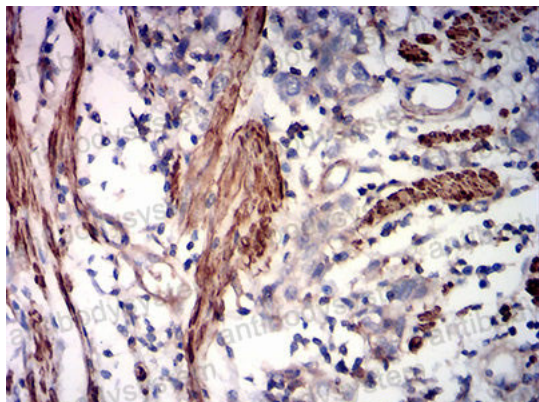
Flow Cytometry

Flow cytometric analysis of HeLa cells using ACTA2 mouse mAb (green) and negative control (red).



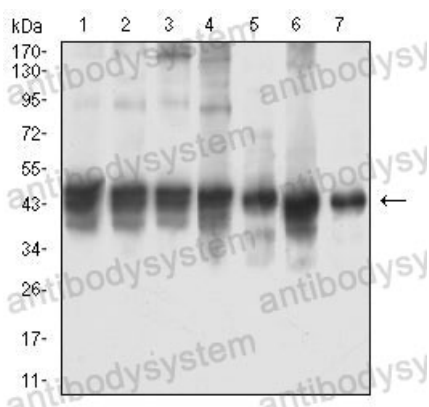
Immunohistochemical

Immunohistochemical analysis of paraffin-embedded human bladder cancer tissues using ACTA2 mouse mAb with DAB staining.



Immunohistochemical

Immunohistochemical analysis of paraffin-embedded human rectum cancer tissues using ACTA2 mouse mAb with DAB staining.



Western blot

Western blot analysis using ACTA2 mouse mAb against EC (1), HUVE-12 (2), A549 (3), NIH/3T3 (4), HL-60 (5), Hela (6), and K652 (7) cell lysate.