

Anti-SMA/ACTA2 Antibody (R3P09)

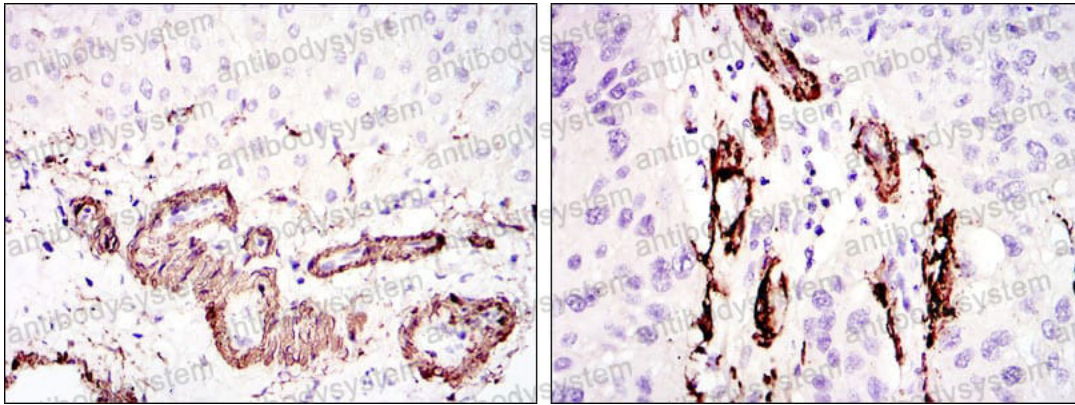
Summary

Catalog No.	RHF52702
Clone ID	R3P09
Host species	Mouse
Tested applications	ELISA: 1:10000, IHC: 1:200-1:1000, WB: 1:500-1:2000
Species reactivity	Human, Monkey
Form	Liquid
Storage buffer	0.01M PBS, pH 7.4, 0.05% Sodium Azide.
Concentration	1 mg/ml
Purity	>95% as determined by SDS-PAGE.
Clonality	Monoclonal
Isotype	IgG1
Applications	ELISA, IHC, WB
Target	Alpha-actin-2, Actin, aortic smooth muscle, Cell growth-inhibiting gene 46 protein, ACTSA, ACTVS, ACTA2
Purification	Protein A/G purified from cell culture supernatant.
Endotoxin level	Please contact with the lab for this information.
Accession	P62736
Stability and Storage	Use a manual defrost freezer and avoid repeated freeze-thaw cycles. Store at 4°C short term (1-2 weeks). Store at -20°C 12 months. Store at -80°C long term.

Note

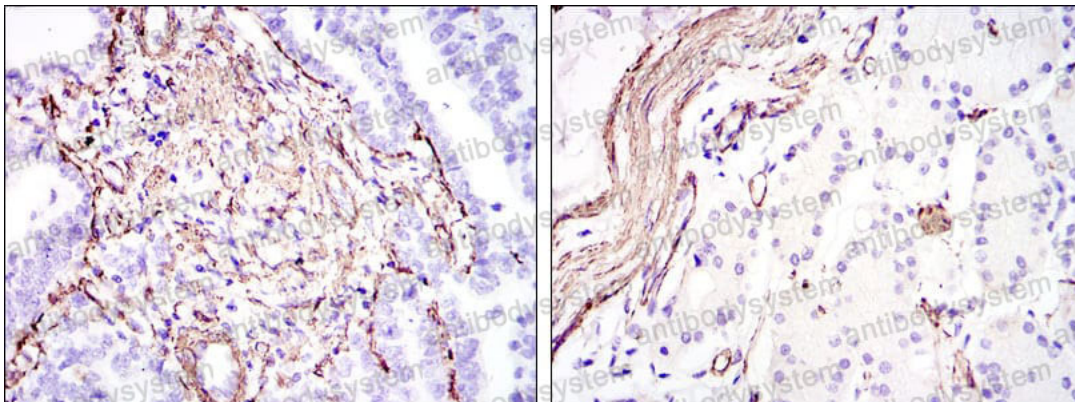
For research use only.

Data Image



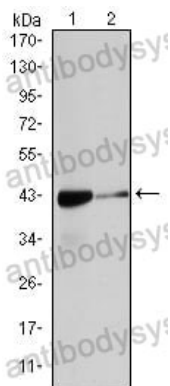
Immunohistochemical analysis of paraffin-embedded human liver tissues (left) and lung cancer tissues (right) using ACTA2 mouse mAb with DAB staining.

Immunohistochemical



Immunohistochemical analysis of paraffin-embedded human stomach cancer (left) and stomach tissues (right) using ACTA2 mouse mAb with DAB staining.

Immunohistochemical



Western blot

Western blot analysis
using ACTA2 mouse
mAb against HeLa (1),
and Cos7 (2) cell lysate.