

# Anti-ETF1 Antibody (R3P07)

## Summary

---

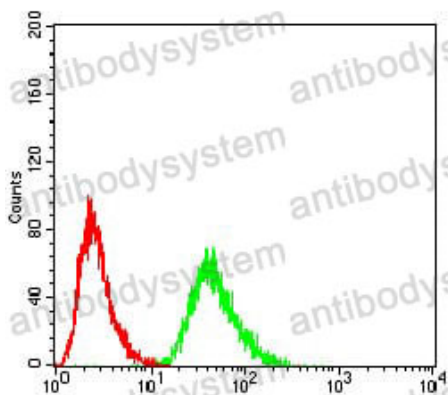
<b>Catalog No.</b>	RHF51701
<b>Clone ID</b>	R3P07
<b>Host species</b>	Mouse
<b>Tested applications</b>	ELISA: 1:10000, FCM: 1:200-1:400, WB: 1:500-1:2000
<b>Species reactivity</b>	Human
<b>Form</b>	Liquid
<b>Storage buffer</b>	0.01M PBS, pH 7.4, 0.05% Sodium Azide.
<b>Concentration</b>	1 mg/ml
<b>Purity</b>	>95% as determined by SDS-PAGE.
<b>Clonality</b>	Monoclonal
<b>Isotype</b>	IgG1
<b>Applications</b>	ELISA, FCM, WB
<b>Target</b>	Protein Cl1, RF1, Eukaryotic release factor 1, Eukaryotic peptide chain release factor subunit 1, eRF1, ETF1, TB3-1, ERF1, SUP45L1
<b>Purification</b>	Protein A/G purified from cell culture supernatant.
<b>Endotoxin level</b>	Please contact with the lab for this information.
<b>Accession</b>	P62495
<b>Stability and Storage</b>	Use a manual defrost freezer and avoid repeated freeze-thaw cycles. Store at 4°C short term (1-2 weeks). Store at -20°C 12 months. Store at -80°C long term.

Note

For research use only.

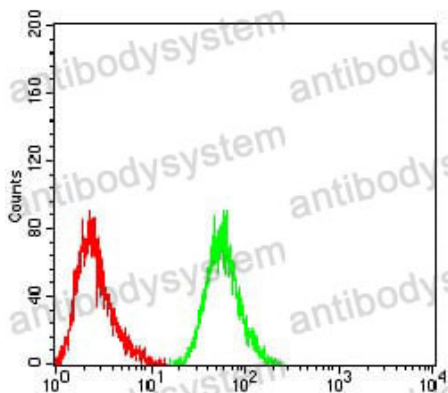
## Data Image

---



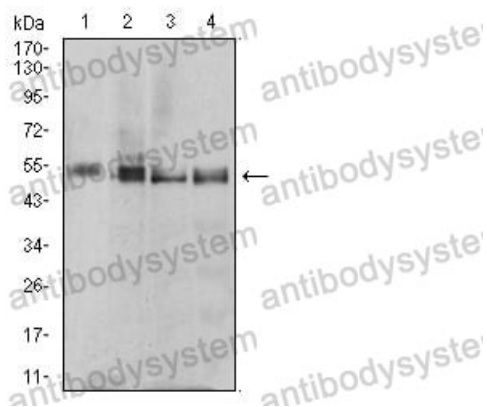
Flow Cytometry

Flow cytometric analysis of HeLa cells using RF1 mouse mAb (green) and negative control (red).



Flow Cytometry

Flow cytometric analysis of HepG2 cells using RF1 mouse mAb (green) and negative control (red).



Western blot

Western blot analysis using mouse mAb against MCF-7 (1), T47D (2), MOLT4 (3), and Raji (4) cell lysate.