

Anti-PPP1CB Antibody (R3P05)

Summary

Catalog No.	RHF48403
Clone ID	R3P05
Host species	Mouse
Tested applications	ELISA: 1:10000, FCM: 1:200-1:400, IF: 1:200-1:1000, IHC: 1:200-1:1000, WB: 1:500-1:2000
Species reactivity	Human
Form	Liquid
Storage buffer	0.01M PBS, pH 7.4, 0.05% Sodium Azide.
Concentration	1 mg/ml
Purity	>95% as determined by SDS-PAGE.
Clonality	Monoclonal
Isotype	IgG1
Applications	ELISA, FCM, IF, IHC, WB
Target	Serine/threonine-protein phosphatase PP1-beta catalytic subunit, PPP1CD, PP-1B, PPP1CB
Purification	Protein A/G purified from cell culture supernatant.
Endotoxin level	Please contact with the lab for this information.
Accession	P62140

Stability and Storage

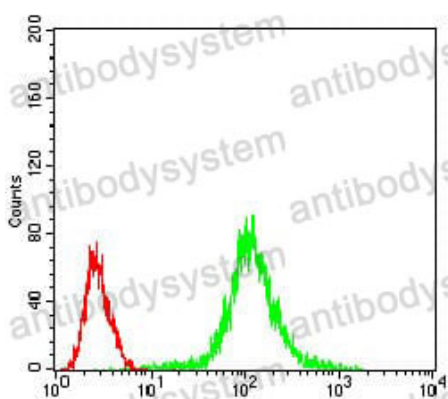
Use a manual defrost freezer and avoid repeated freeze-thaw cycles.

Store at 4°C short term (1-2 weeks). Store at -20°C 12 months. Store at -80°C long term.

Note

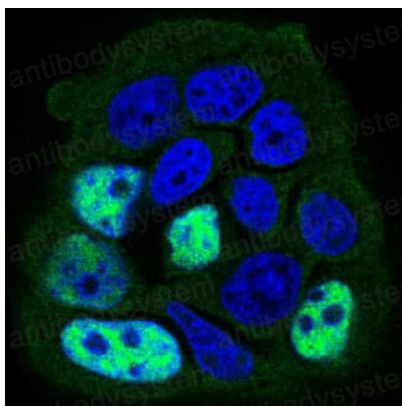
For research use only.

Data Image



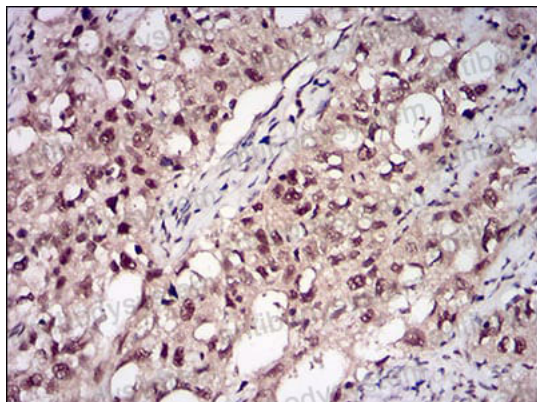
Flow Cytometry

Flow cytometric analysis of Jurkat cells using PPP1CB mouse mAb (green) and negative control (red).



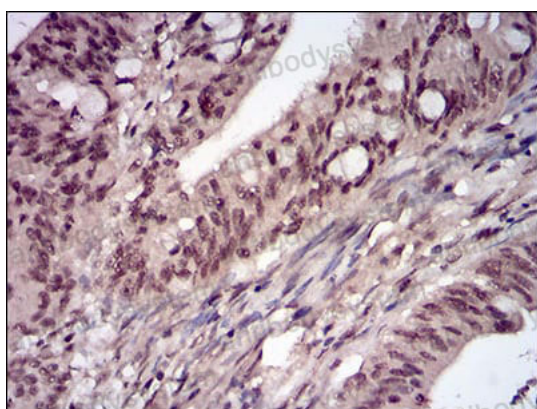
Immunofluorescence

Immunofluorescence analysis of MCF-7 cells using PPP1CB mouse mAb (green). Blue: DRAQ5 fluorescent DNA dye.



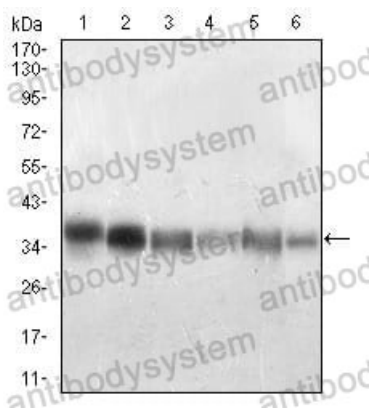
Immunohistochemical

Immunohistochemical analysis of paraffin-embedded human cervical cancer tissues using PPP1CB mouse mAb with DAB staining.



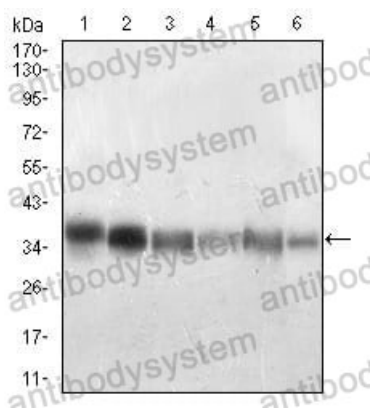
Immunohistochemical

Immunohistochemical analysis of paraffin-embedded human rectum cancer tissues using PPP1CB mouse mAb with DAB staining.



Western blot

Western blot analysis using PPP1CB mouse mAb against Jurkat (1), A431 (2), Hela (3), HepG2 (4), HEK293 (5), MCF-7 (6) cell lysate.



Western blot

Western blot analysis using PPP1CB mouse mAb against Jurkat (1), A431 (2), Hela (3), HepG2 (4), HEK293 (5), MCF-7 (6) cell lysate.