

# Anti-PPP1CB Antibody (R3P04)

## Summary

---

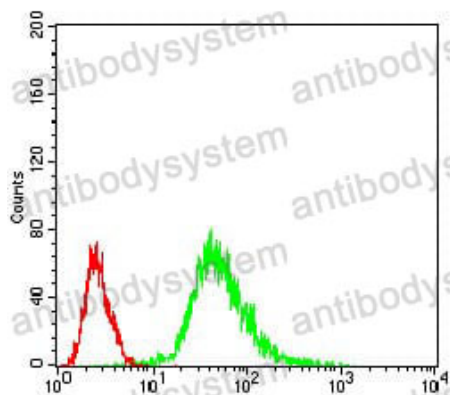
<b>Catalog No.</b>	RHF48402
<b>Clone ID</b>	R3P04
<b>Host species</b>	Mouse
<b>Tested applications</b>	ELISA: 1:10000, FCM: 1:200-1:400, IHC: 1:200-1:1000, WB: 1:500-1:2000
<b>Species reactivity</b>	Human
<b>Form</b>	Liquid
<b>Storage buffer</b>	0.01M PBS, pH 7.4, 0.05% Sodium Azide.
<b>Concentration</b>	1 mg/ml
<b>Purity</b>	>95% as determined by SDS-PAGE.
<b>Clonality</b>	Monoclonal
<b>Isotype</b>	IgG1
<b>Applications</b>	ELISA, FCM, IHC, WB
<b>Target</b>	Serine/threonine-protein phosphatase PP1-beta catalytic subunit, PPP1CD, PP-1B, PPP1CB
<b>Purification</b>	Protein A/G purified from cell culture supernatant.
<b>Endotoxin level</b>	Please contact with the lab for this information.
<b>Accession</b>	P62140
<b>Stability and Storage</b>	Use a manual defrost freezer and avoid repeated freeze-thaw cycles. Store at 4°C short term (1-2 weeks). Store at -20°C 12 months. Store at -80°C long term.

**Note**

For research use only.

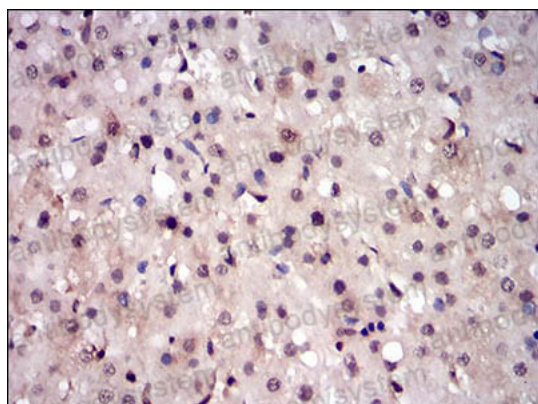
## Data Image

---



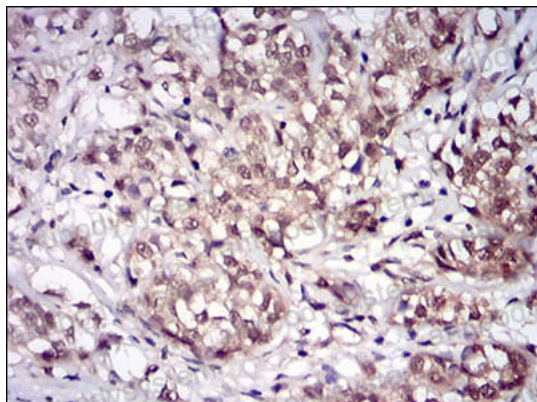
Flow Cytometry

Flow cytometric analysis of Jurkat cells using PPP1CB mouse mAb (green) and negative control (red).



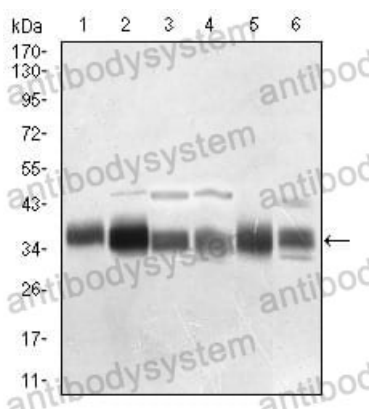
Immunohistochemical

Immunohistochemical analysis of paraffin-embedded human liver tissues using PPP1CB mouse mAb with DAB staining.



Immunohistochemical

Immunohistochemical analysis of paraffin-embedded human bladder cancer tissues using PPP1CB mouse mAb with DAB staining.



Western blot

Western blot analysis using PPP1CB mouse mAb against Jurkat (1), A431 (2), Hela (3), HepG2 (4), HEK293 (5), MCF-7 (6) cell lysate.