

Anti-RHOA Antibody (R3N93)

Summary

Catalog No.	RHF45102
Clone ID	R3N93
Host species	Mouse
Tested applications	ELISA: 1:10000, FCM: 1:200-1:400, IF: 1:200-1:1000, IHC: 1:200-1:1000, WB: 1:500-1:2000
Species reactivity	Human
Form	Liquid
Storage buffer	0.01M PBS, pH 7.4, 0.05% Sodium Azide.
Concentration	1 mg/ml
Purity	>95% as determined by SDS-PAGE.
Clonality	Monoclonal
Isotype	IgG2b
Applications	ELISA, FCM, IF, IHC, WB
Target	Rho cDNA clone 12, ARH12, RHO12, ARHA, RHOA, Transforming protein RhoA, h12
Purification	Protein A/G purified from cell culture supernatant.
Endotoxin level	Please contact with the lab for this information.
Accession	P61586

Stability and Storage

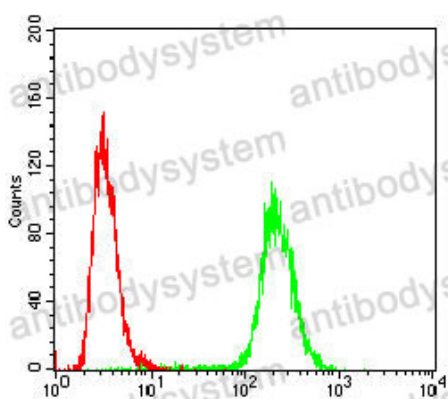
Use a manual defrost freezer and avoid repeated freeze-thaw cycles.

Store at 4°C short term (1-2 weeks). Store at -20°C 12 months. Store at -80°C long term.

Note

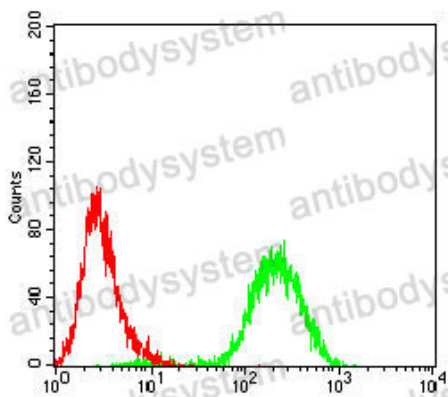
For research use only.

Data Image



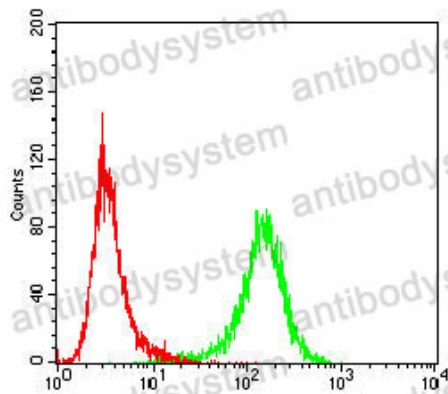
Flow Cytometry

Flow cytometric analysis of HeLa cells using RHOA mouse mAb (green) and negative control (red).



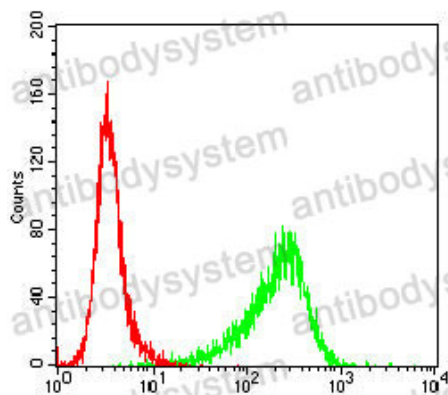
Flow Cytometry

Flow cytometric analysis of HepG2 cells using RHOA mouse mAb (green) and negative control (red).



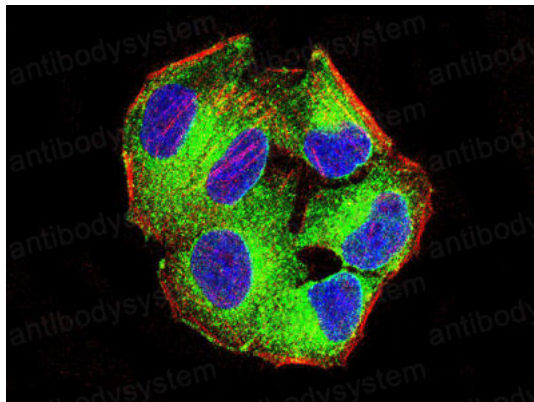
Flow Cytometry

Flow cytometric analysis of Jurkat cells using RHOA mouse mAb (green) and negative control (red).



Flow Cytometry

Flow cytometric analysis of K562 cells using RHOA mouse mAb (green) and negative control (red).



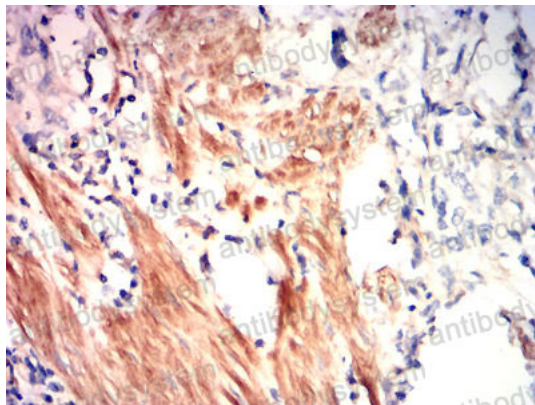
Immunofluorescence

Immunofluorescence analysis of Hela cells using RHOA mouse mAb (green). Blue: DRAQ5 fluorescent DNA dye. Red: Actin filaments have been labeled with Alexa Fluor- 555 phalloidin.



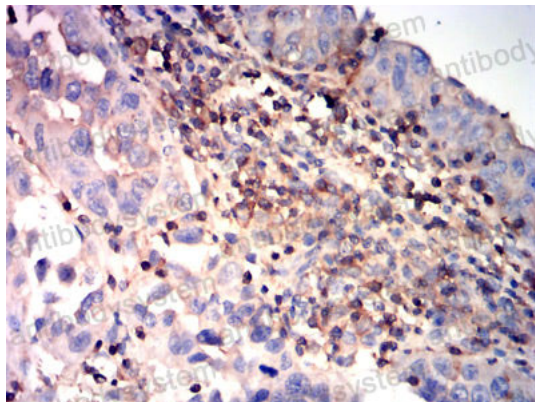
Immunofluorescence

Immunofluorescence analysis of HeLa cells using RHOA mouse mAb (green). Blue: DRAQ5 fluorescent DNA dye. Red: Actin filaments have been labeled with Alexa Fluor- 555 phalloidin.



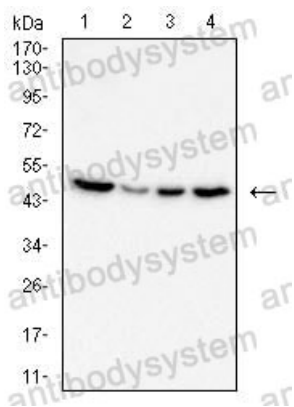
Immunohistochemical

Immunohistochemical analysis of paraffin-embedded human gastric cancer tissues using RHOA mouse mAb with DAB staining.



Immunohistochemical

Immunohistochemical analysis of paraffin-embedded human endometrial carcinoma tissues using RHOA mouse mAb with DAB staining.



Western blot

Western blot analysis using RHOA mouse mAb against Jurlat (1), MCF-7 (2), A431 (3), and HeLa (4) cell lysate.