

# Anti-ISL1 Antibody (R3N92)

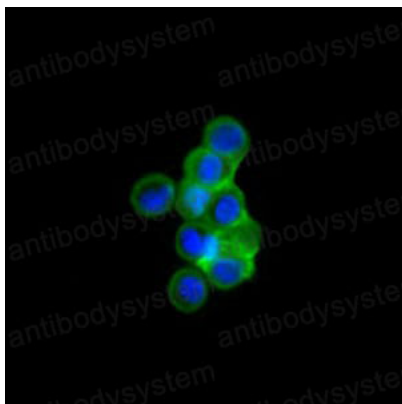
## Summary

---

<b>Catalog No.</b>	RHF42903
<b>Clone ID</b>	R3N92
<b>Host species</b>	Mouse
<b>Tested applications</b>	IF: 1:50-1:500, IHC: 1:100-1:500
<b>Species reactivity</b>	Human, Mouse, Rat, Rabbit
<b>Form</b>	Liquid
<b>Storage buffer</b>	0.01M PBS, pH 7.4, 0.05% Sodium Azide.
<b>Concentration</b>	1 mg/ml
<b>Purity</b>	>95% as determined by SDS-PAGE.
<b>Clonality</b>	Monoclonal
<b>Isotype</b>	IgG1
<b>Applications</b>	IF, IHC
<b>Target</b>	Insulin gene enhancer protein ISL-1, ISL1, Islet-1
<b>Purification</b>	Protein A/G purified from cell culture supernatant.
<b>Endotoxin level</b>	Please contact with the lab for this information.
<b>Accession</b>	P61371
<b>Stability and Storage</b>	Use a manual defrost freezer and avoid repeated freeze-thaw cycles. Store at 4°C short term (1-2 weeks). Store at -20°C 12 months. Store at -80°C long term.
<b>Note</b>	For research use only.

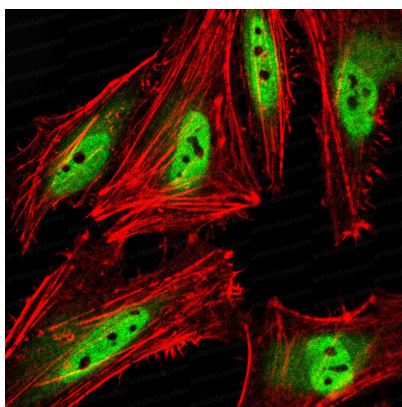
## Data Image

---



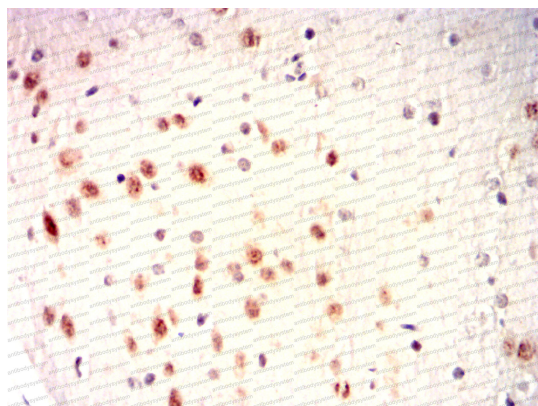
Immunofluorescence

Confocal Immunofluorescence analysis of HEK293 cells transfected with full-length ISL1-hIgGFc using ISL1 mouse mAb (green). Blue: DRAQ5 fluorescent DNA dye.



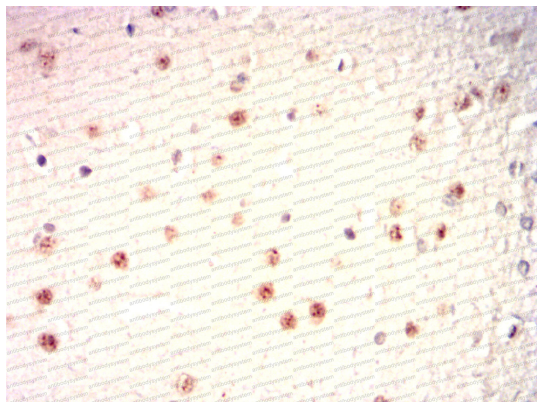
Immunofluorescence

Immunofluorescence analysis of HeLa cells using ISL1 mouse mAb (green). Blue: DRAQ5 fluorescent DNA dye. Red: Actin filaments have been labeled with Alexa Fluor-555 phalloidin.



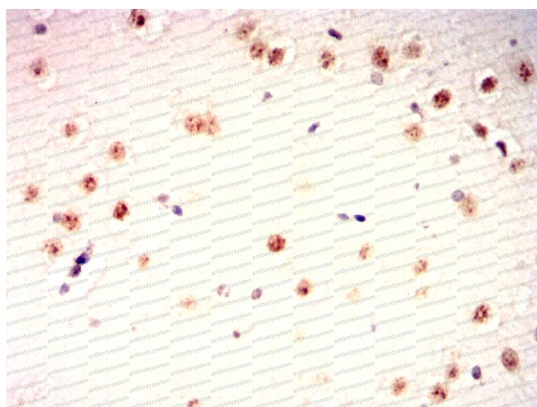
Immunohistochemical

Immunohistochemical analysis of paraffin-embedded mouse brain using ISL1 mouse mAb with DAB staining.



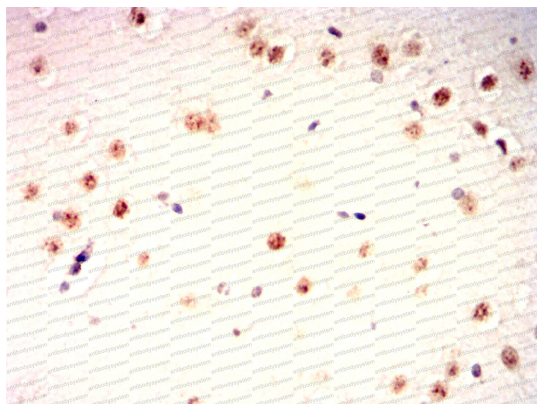
Immunohistochemical

Immunohistochemical analysis of paraffin-embedded Rat brain using ISL1 mouse mAb with DAB staining.



Immunohistochemical

Immunohistochemical analysis of paraffin-embedded Rabbit brain using ISL1 mouse mAb with DAB staining.



Immunohistochemical

Immunohistochemical analysis of paraffin-embedded Rabbit brain using ISL1 mouse mAb with DAB staining.