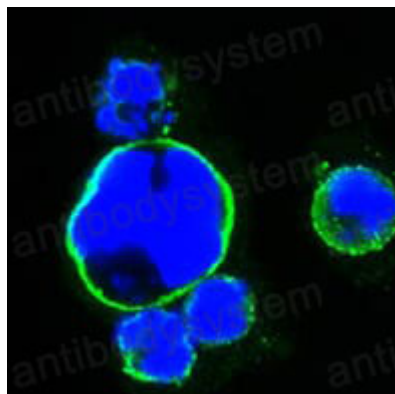


Anti-ISL1 Antibody (R3N91)

Summary

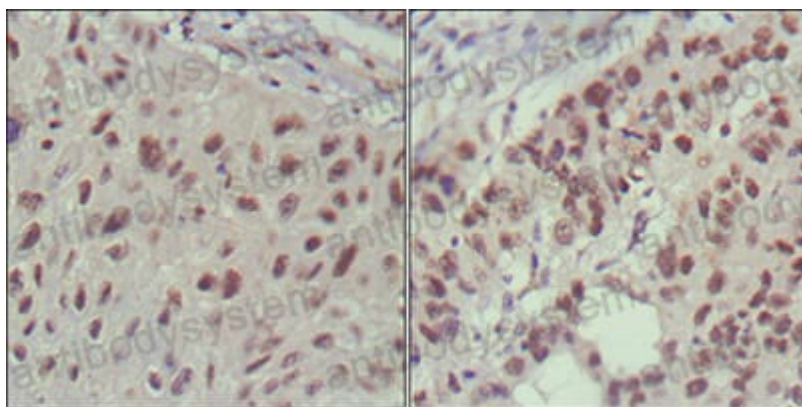
Catalog No.	RHF42902
Clone ID	R3N91
Host species	Mouse
Tested applications	IF: 1:200-1:1000, IHC: 1:200-1:1000
Species reactivity	Human, Mouse, Rat, Rabbit
Form	Liquid
Storage buffer	0.01M PBS, pH 7.4, 0.05% Sodium Azide.
Concentration	1 mg/ml
Purity	>95% as determined by SDS-PAGE.
Clonality	Monoclonal
Isotype	IgG1
Applications	IF, IHC
Target	Insulin gene enhancer protein ISL-1, ISL1, Islet-1
Purification	Protein A/G purified from cell culture supernatant.
Endotoxin level	Please contact with the lab for this information.
Accession	P61371
Stability and Storage	Use a manual defrost freezer and avoid repeated freeze-thaw cycles. Store at 4°C short term (1-2 weeks). Store at -20°C 12 months. Store at -80°C long term.
Note	For research use only.

Data Image



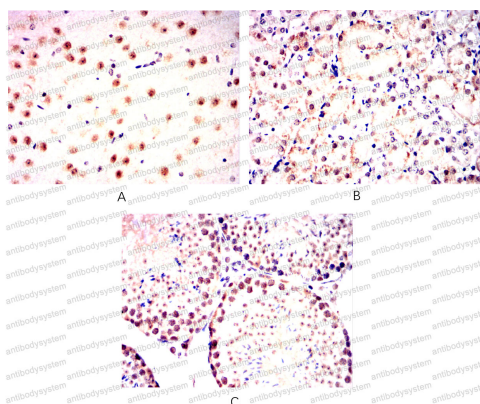
Immunofluorescence

Confocal Immunofluorescence analysis of HEK293 cells transfected with full-length ISL1-hIgGFc using ISL1 mouse mAb (green). Blue: DRAQ5 fluorescent DNA dye.



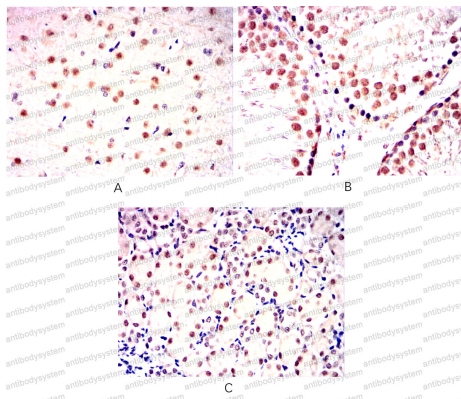
Immunohistochemical

Immunohistochemical analysis of paraffin-embedded human lung cancer (left) and cervical carcinoma (right), showing nuclear localization using ISL1 mouse mAb with DAB staining.



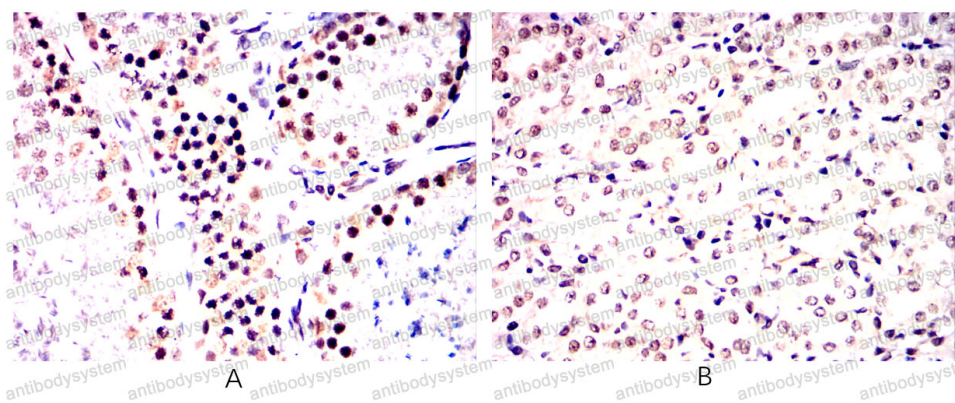
Immunohistochemical

Immunohistochemical analysis of paraffin-embedded Mouse brain(A) Mouse testis(B) Mouse kidney(C) using ISL1 mouse mAb with DAB staining.



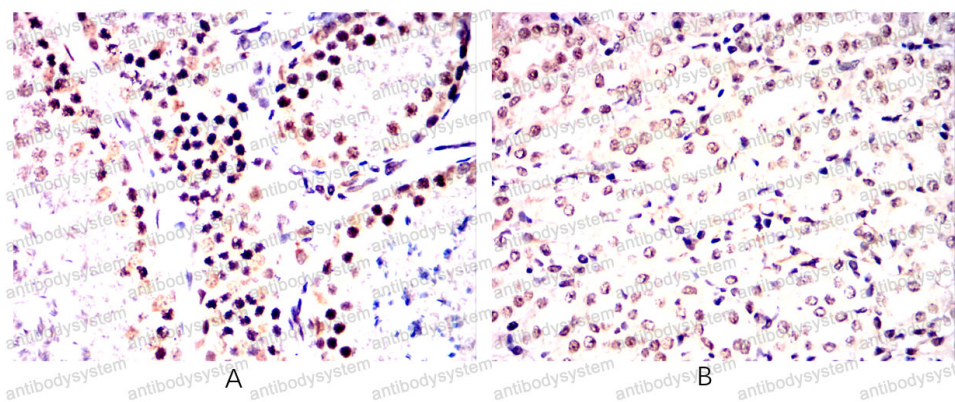
Immunohistochemical

Immunohistochemical analysis of paraffin-embedded Rat brain(A)Rat testis(B)Rat kidney(C) using ISL1 mouse mAb with DAB staining.



Immunohistochemical

Immunohistochemical analysis of paraffin-embedded Rabbit testis(A)Rabbit kidney(B) using ISL1 mouse mAb with DAB staining.



Immunohistochemical

Immunohistochemical analysis of paraffin-embedded Rabbit testis(A)Rabbit kidney(B) using ISL1 mouse mAb with DAB staining.