

Anti-SNAP25 Antibody (R3N82)

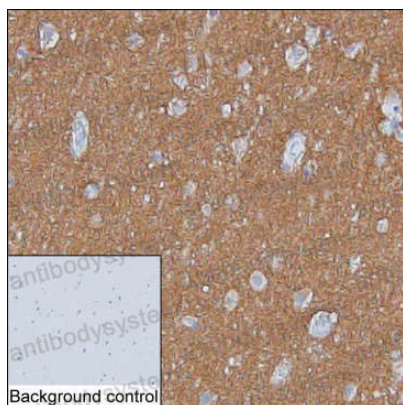
Summary

Catalog No.	RHF38105
Clone ID	R3N82
Host species	Mouse
Tested applications	IHC: 1:50-1:250, IP: 1:100-1:200, WB: 1:500-1:1000
Species reactivity	Human
Form	Liquid
Storage buffer	0.01M PBS, pH 7.4, 0.05% Sodium Azide.
Concentration	1 mg/ml
Purity	>95% as determined by SDS-PAGE.
Clonality	Monoclonal
Isotype	IgG1
Applications	IHC, IP, WB
Target	SNAP25, Super protein, SUP, Synaptosomal-associated protein 25, SNAP, SNAP-25, Synaptosomal-associated 25 kDa protein
Purification	Protein A/G purified from cell culture supernatant.
Endotoxin level	Please contact with the lab for this information.
Accession	P60880
Stability and Storage	Use a manual defrost freezer and avoid repeated freeze-thaw cycles. Store at 4°C short term (1-2 weeks). Store at -20°C 12 months. Store at -80°C long term.

Note

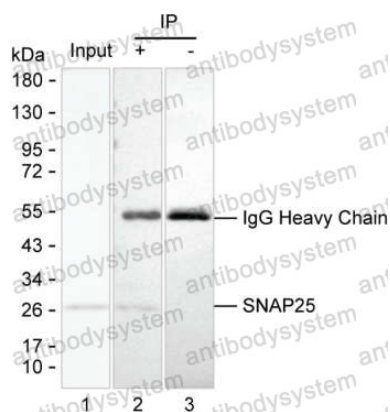
For research use only.

Data Image



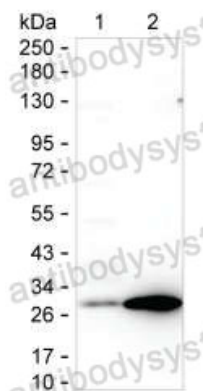
Immunohistochemical

IHC-P analysis of cerebral cortex tissue by anti-SNAP25 antibody (RHF38105). IHC-P was performed using sections of the formalin-fixed paraffin-embedded cerebral cortex tissue; Result: Neuropil are positively stained.



Immunoprecipitation

Lane 1: Rat brain tissue lysate; Lane 2: SNAP25 immunoprecipitated from rat brain tissue lysate by RHF38105; Lane 3: The same as Lane 2 but use IgG isotype control antibody; Result: RHF38105 can immunoprecipitate SNAP25;



Western blot

Lane 1: 15 μ g of SH-SY5Y lysate; Lane 2: 15 μ g of rat brain tissue lysate; Result: RHF38105 can detect SNAP25 by Western blotting.