

Anti-EIF4A1 Antibody (R3N81)

Summary

| | |
|------------------------------|---|
| Catalog No. | RHF37803 |
| Clone ID | R3N81 |
| Host species | Mouse |
| Tested applications | IF: 1:50-1:200, IHC: 1:50-1:100, WB: 1:500-1:1000 |
| Species reactivity | Human, Mouse, Rat |
| Form | Liquid |
| Storage buffer | 0.01M PBS, pH 7.4, 0.5% BSA, 0.05% Sodium Azide and 50% Glycerol. |
| Concentration | 1 mg/ml |
| Purity | >95% as determined by SDS-PAGE. |
| Clonality | Monoclonal |
| Isotype | IgG1 |
| Applications | IF, IHC, WB |
| Target | Eukaryotic initiation factor 4A-I, eIF4A-I, eIF-4A-I, EIF4A, EIF4A1, DDX2A, ATP-dependent RNA helicase eIF4A-1 |
| Purification | Protein A/G purified from cell culture supernatant. |
| Endotoxin level | Please contact with the lab for this information. |
| Accession | P60842 |
| Stability and Storage | Use a manual defrost freezer and avoid repeated freeze-thaw cycles. Store at 4°C short term (1-2 weeks). Store at -20°C 12 months. Store at -80°C long term. |

Note

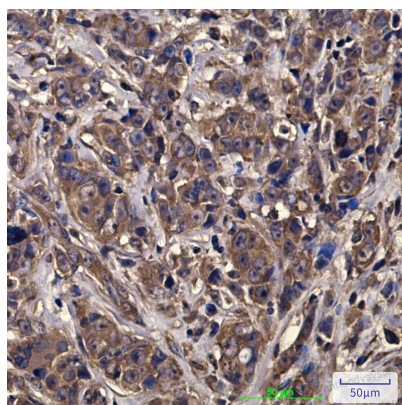
For research use only.

Data Image



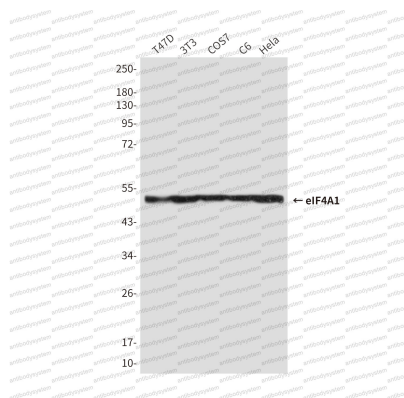
Immunofluorescence

Immunofluorescence analysis of eIF4A1 in HeLa using eIF4A1 antibody (Left), and DAPI (blue)



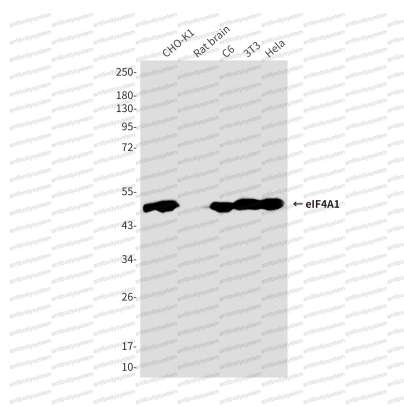
Immunohistochemical

Immunohistochemical analysis of paraffin-embedded Human breast cancer tissue using eIF4A1 antibody. High-pressure and temperature Sodium Citrate pH 6.0 was used for antigen retrieval.



Western blot

Western blot analysis of eIF4A1 in T47D, 3T3, COS7, C6 and HeLa lysates using eIF4A1 antibody.



Western blot

Western blot analysis of eIF4A1 in CHO-K1, rat brain, C6, 3T3, HeLa lysates using eIF4A antibody.