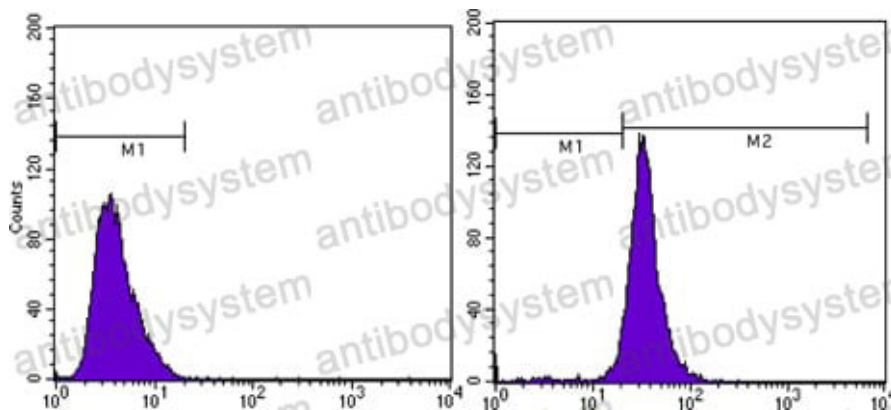


Anti-ACTB/ β -actin/Beta Actin Antibody (R3N80)

Summary

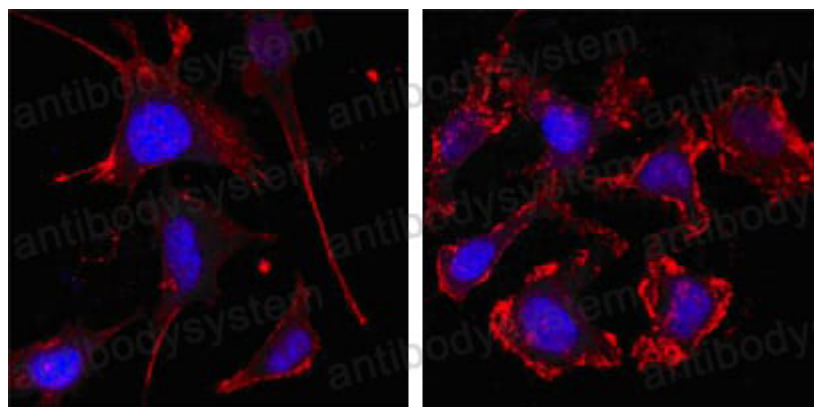
Catalog No.	RHF37503
Clone ID	R3N80
Host species	Mouse
Tested applications	FCM: 1:200-1:400, IF: 1:50-1:500, IP: 1:100-1:200, WB: 1:10000-1:40000
Species reactivity	Human, Mouse, Rat, Dog, Hamster, Monkey
Form	Liquid
Storage buffer	0.01M PBS, pH 7.4, 0.05% Sodium Azide.
Concentration	1 mg/ml
Purity	>95% as determined by SDS-PAGE.
Clonality	Monoclonal
Isotype	IgG2b
Applications	FCM, IF, IP, WB
Target	Beta-actin, ACTB, Actin, cytoplasmic 1
Purification	Protein A/G purified from cell culture supernatant.
Endotoxin level	Please contact with the lab for this information.
Accession	P60709
Stability and Storage	Use a manual defrost freezer and avoid repeated freeze-thaw cycles. Store at 4°C short term (1-2 weeks). Store at -20°C 12 months. Store at -80°C long term.
Note	For research use only.

Data Image



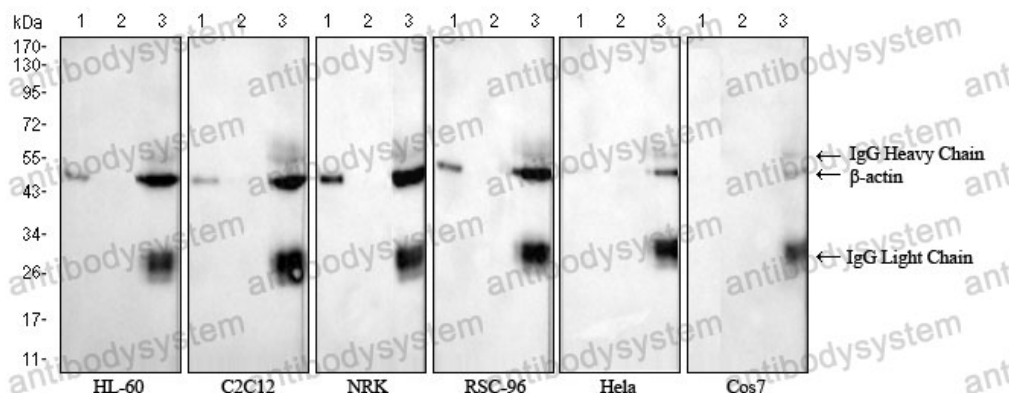
Flow Cytometry

Flow cytometric analysis of MCF-7 cells (left).



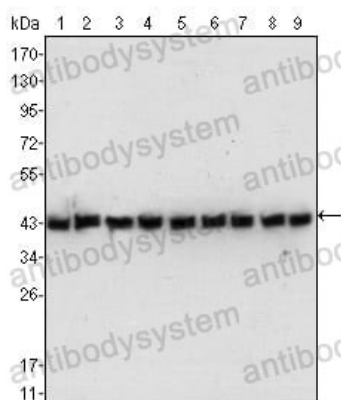
Immunofluorescence

Confocal Immunofluorescence analysis of mAb (red, the secondary Ab is Cy3-Goat anti-mouse IgG).



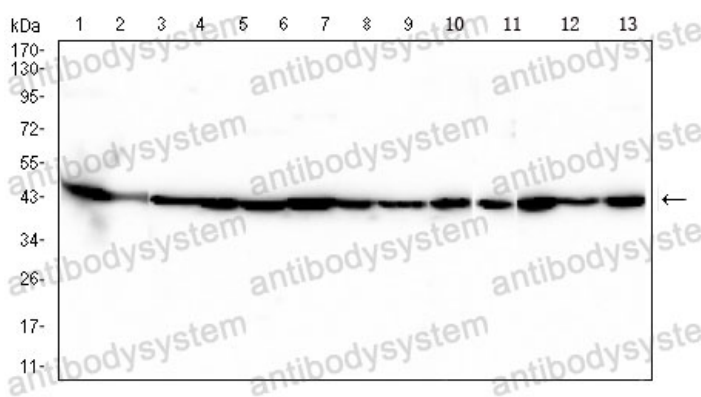
Immunoprecipitation

Immunoprecipitation using beta-Actin antibody in HL-60, C2C12, NRK, RSC, HeLa, Cos7 cell lysates.



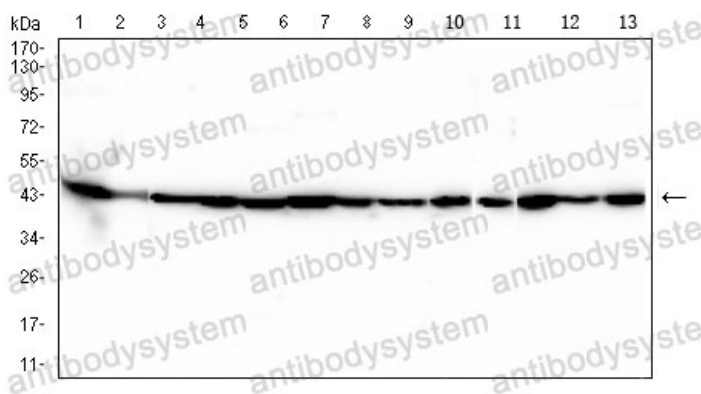
Western blot

Western blot analysis using beta-Actin
PC12 (5), HEK293 (6), COS (7), A549 (8)



Western blot

Western blot analysis using beta-Actin
12(3), Raw264.7(4), NIH/3T3(5), NRK(6), C
cell lysate.



Western blot

Western blot analysis using beta-Actin
12(3), Raw264.7(4), NIH/3T3(5), NRK(6), C
cell lysate.