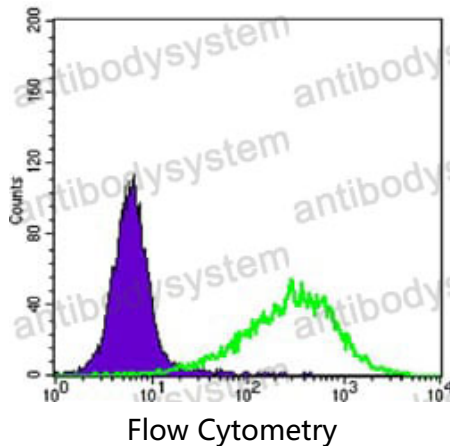


Anti-RAB25 Antibody (R3N70)

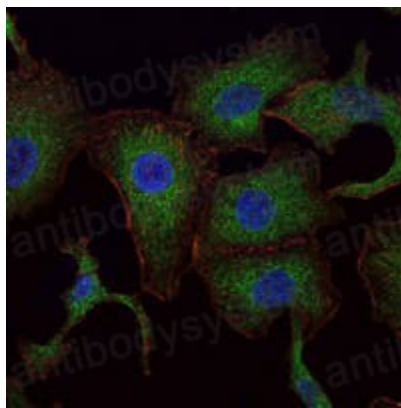
Summary

| | |
|------------------------------|---|
| Catalog No. | RHF23401 |
| Clone ID | R3N70 |
| Host species | Mouse |
| Tested applications | FCM: 1:200-1:400, IF: 1:200-1:1000, IHC: 1:200-1:1000, WB: 1:500-1:2000 |
| Species reactivity | Human, Mouse |
| Form | Liquid |
| Storage buffer | 0.01M PBS, pH 7.4, 0.05% Sodium Azide. |
| Concentration | 1 mg/ml |
| Purity | >95% as determined by SDS-PAGE. |
| Clonality | Monoclonal |
| Isotype | IgG1 |
| Applications | FCM, IF, IHC, WB |
| Target | RAB25, CATX8, CATX-8, Ras-related protein Rab-25 |
| Purification | Protein A/G purified from cell culture supernatant. |
| Endotoxin level | Please contact with the lab for this information. |
| Accession | P57735 |
| Stability and Storage | Use a manual defrost freezer and avoid repeated freeze-thaw cycles. Store at 4°C short term (1-2 weeks). Store at -20°C 12 months. Store at -80°C long term. |
| Note | For research use only. |

Data Image

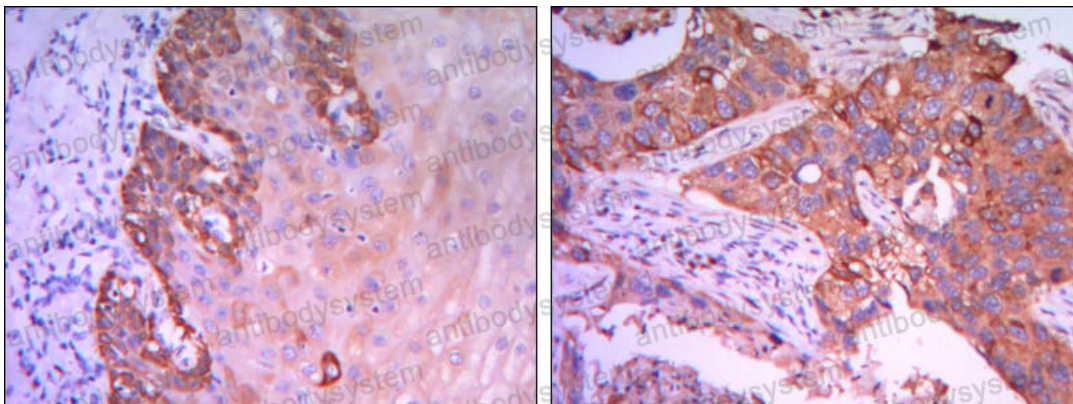


Flow cytometric analysis of NIH/3T3 cells using Rab25 mouse mAb (green) and negative control (purple).



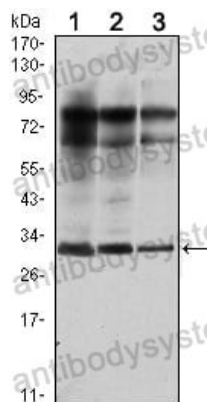
Immunofluorescence

Immunofluorescence analysis of A549 cells using RAB25 mouse mAb (green). Blue: DRAQ5 fluorescent DNA dye. Red: Actin filaments have been labeled with Alexa Fluor-555 phalloidin.



Immunohistochemical

Immunohistochemical analysis of paraffin-embedded human esophagus tissues (left) and human lung cancer (right) using Rab25 mouse mAb with DAB staining.



Western blot

Western blot analysis
using Rab25 mouse
mAb against MCF-7 (1),
T47D (2) and GC7901 (3)
cell lysate.