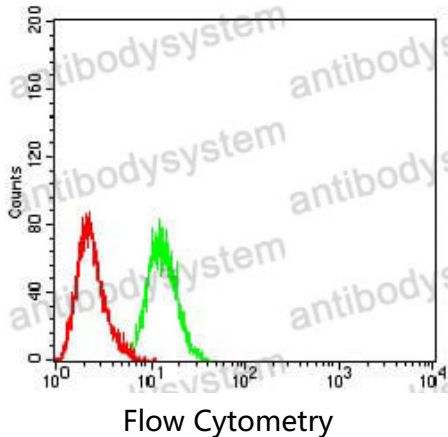


Anti-CDH11 Antibody (R3N42)

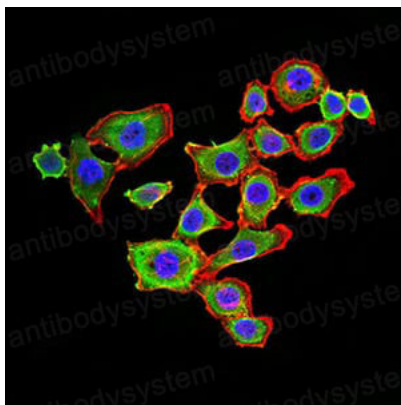
Summary

| | |
|------------------------------|---|
| Catalog No. | RHF12002 |
| Clone ID | R3N42 |
| Host species | Mouse |
| Tested applications | ELISA: 1:10000, FCM: 1:200-1:400, IF: 1:200-1:1000, IHC: 1:200-1:1000 |
| Species reactivity | Human |
| Form | Liquid |
| Storage buffer | 0.01M PBS, pH 7.4, 0.05% Sodium Azide. |
| Concentration | 1 mg/ml |
| Purity | >95% as determined by SDS-PAGE. |
| Clonality | Monoclonal |
| Isotype | IgG1 |
| Applications | ELISA, FCM, IF, IHC |
| Target | CDH11, OSF-4, Osteoblast cadherin, Cadherin-11, OB-cadherin |
| Purification | Protein A/G purified from cell culture supernatant. |
| Endotoxin level | Please contact with the lab for this information. |
| Accession | P55287 |
| Stability and Storage | Use a manual defrost freezer and avoid repeated freeze-thaw cycles. Store at 4°C short term (1-2 weeks). Store at -20°C 12 months. Store at -80°C long term. |
| Note | For research use only. |

Data Image

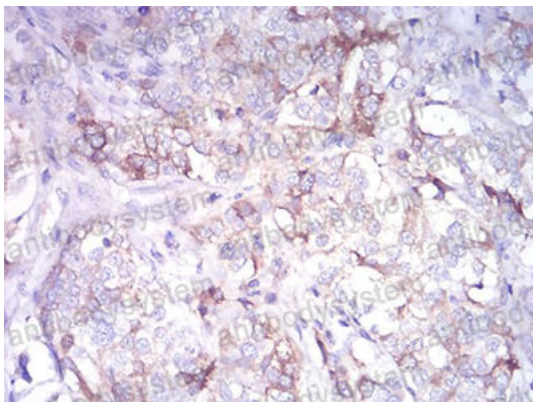


Flow cytometric analysis of Hela cells using CDH11 mouse mAb (green) and negative control (red).



Immunofluorescence

Immunofluorescence analysis of HL-7702 cells using CDH11 mouse mAb (green). Blue: DRAQ5 fluorescent DNA dye. Red: Actin filaments have been labeled with Alexa Fluor- 555 phalloidin.



Immunohistochemical

Immunohistochemical analysis of paraffin-embedded human bladder cancer tissues using CDH11 mouse mAb with DAB staining.