

Anti-NR1H2/LXRb Antibody (R3N33)

Summary

Catalog No.	RHF08201
Clone ID	R3N33
Host species	Mouse
Tested applications	ELISA: 1:10000, FCM: 1:200-1:400, IF: 1:200-1:1000
Species reactivity	Human
Form	Liquid
Storage buffer	0.01M PBS, pH 7.4, 0.05% Sodium Azide.
Concentration	1 mg/ml
Purity	>95% as determined by SDS-PAGE.
Clonality	Monoclonal
Isotype	IgG2b
Applications	ELISA, FCM, IF
Target	UNR, Oxysterols receptor LXR-beta, LXRb, NR1H2, Nuclear receptor subfamily 1 group H member 2, Liver X receptor beta, NER, Ubiquitously-expressed nuclear receptor, Nuclear receptor NER
Purification	Protein A/G purified from cell culture supernatant.
Endotoxin level	Please contact with the lab for this information.
Accession	P55055

Stability and Storage

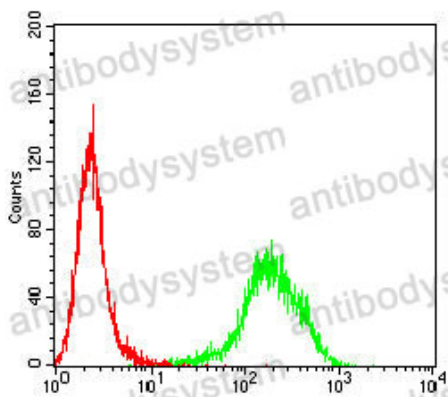
Use a manual defrost freezer and avoid repeated freeze-thaw cycles.

Store at 4°C short term (1-2 weeks). Store at -20°C 12 months. Store at -80°C long term.

Note

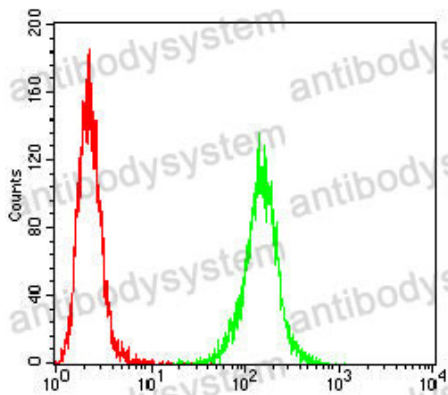
For research use only.

Data Image



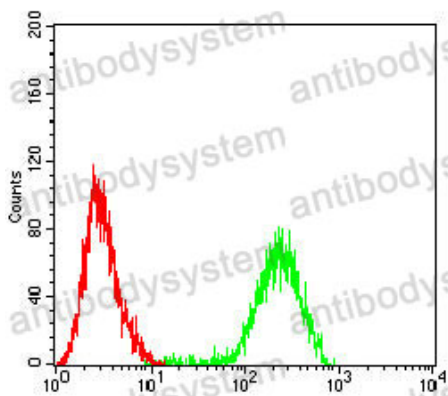
Flow Cytometry

Flow cytometric analysis of A375 cells using NR1H2 mouse mAb (green) and negative control (red).



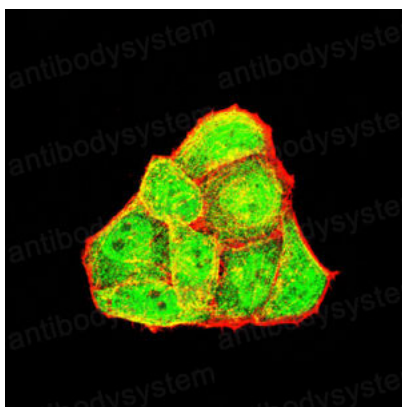
Flow Cytometry

Flow cytometric analysis of Hela cells using NR1H2 mouse mAb (green) and negative control (red).



Flow Cytometry

Flow cytometric analysis of Raji cells using NR1H2 mouse mAb (green) and negative control (red).



Immunofluorescence

Immunofluorescence analysis of Hela cells using NR1H2 mouse mAb (green). Blue: DRAQ5 fluorescent DNA dye. Red: Actin filaments have been labeled with Alexa Fluor- 555 phalloidin.