

Anti-EPHB3 Antibody (R3N26)

Summary

Catalog No.	RHF04902
Clone ID	R3N26
Host species	Mouse
Tested applications	IHC: 1:200-1:1000
Species reactivity	Human
Form	Liquid
Storage buffer	0.01M PBS, pH 7.4, 0.05% Sodium Azide.
Concentration	1 mg/ml
Purity	>95% as determined by SDS-PAGE.
Clonality	Monoclonal
Isotype	IgG2a
Applications	IHC
Target	EPHB3, Embryonic kinase 2, EPH-like tyrosine kinase 2, Tyrosine-protein kinase TYRO6, EPH-like kinase 2, ETK2, EK2, hEK2, HEK2, Ephrin type-B receptor 3, TYRO6
Purification	Protein A/G purified from cell culture supernatant.
Endotoxin level	Please contact with the lab for this information.
Accession	P54753

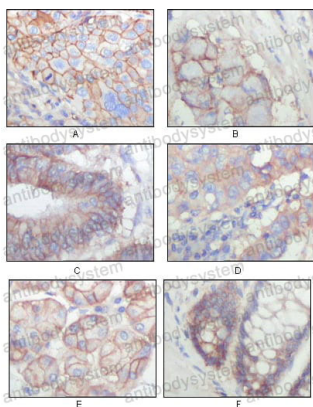
Stability and Storage

Use a manual defrost freezer and avoid repeated freeze-thaw cycles.

Store at 4°C short term (1-2 weeks). Store at -20°C 12 months. Store at -80°C long term.

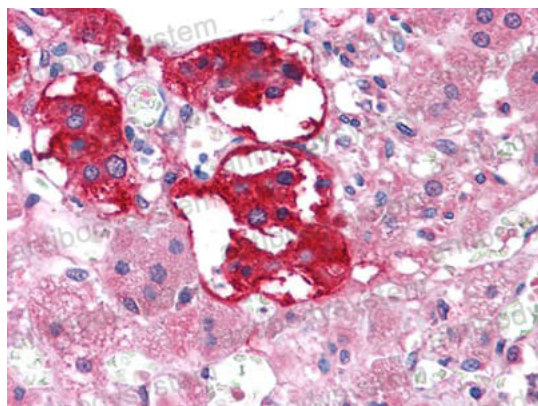
Note

For research use only.

Data Image

Immunohistochemical

Immunohistochemical analysis of paraffin-embedded human lung squamous cell carcinoma (A), lung adenocarcinoma (B), colon carcinoma (C), breast carcinoma (D), normal sublingual gland (E), normal rectal (F), showing membrane localization with DAB staining using EphB3 mouse mAb.



Immunohistochemical

Immunohistochemical analysis of paraffin-embedded human Adrenal tissues using EPHB3 mouse mAb