

Anti-PMS2 Antibody (R3N15)

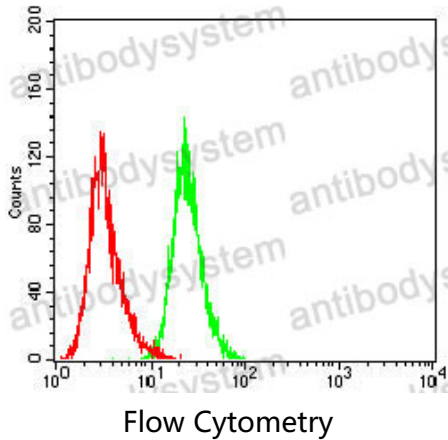
Summary

Catalog No.	RHF03006
Clone ID	R3N15
Host species	Mouse
Tested applications	ELISA: 1:10000, FCM: 1:200-1:400, IHC: 1:200-1:1000, WB: 1:500-1:2000
Species reactivity	Human
Form	Liquid
Storage buffer	0.01M PBS, pH 7.4, 0.05% Sodium Azide.
Concentration	1 mg/ml
Purity	>95% as determined by SDS-PAGE.
Clonality	Monoclonal
Isotype	IgG1
Applications	ELISA, FCM, IHC, WB
Target	DNA mismatch repair protein PMS2, PMS2, PMSL2, PMS1 protein homolog 2, Mismatch repair endonuclease PMS2
Purification	Protein A/G purified from cell culture supernatant.
Endotoxin level	Please contact with the lab for this information.
Accession	P54278
Stability and Storage	Use a manual defrost freezer and avoid repeated freeze-thaw cycles. Store at 4°C short term (1-2 weeks). Store at -20°C 12 months. Store at -80°C long term.

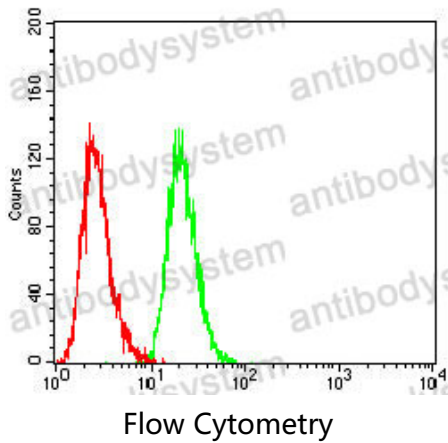
Note

For research use only.

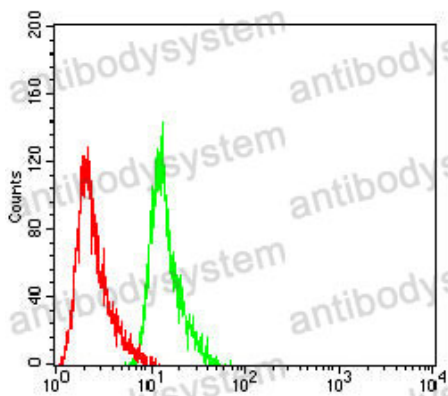
Data Image



Flow cytometric analysis of A431 cells using PMS2 mouse mAb (green) and negative control (red).

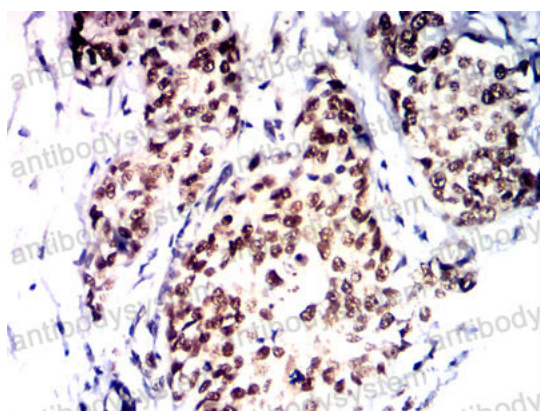


Flow cytometric analysis of Hepg2 cells using PMS2 mouse mAb (green) and negative control (red).



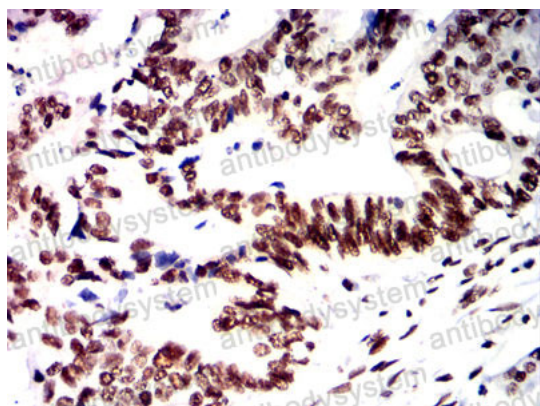
Flow Cytometry

Flow cytometric analysis of NIH3T3 cells using PMS2 mouse mAb (green) and negative control (red).



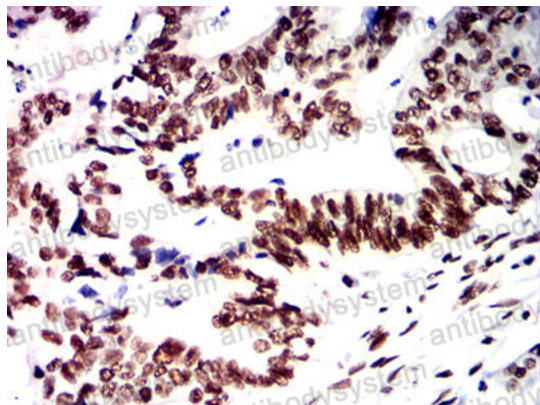
Immunohistochemical

Immunohistochemical analysis of paraffin-embedded human bladder cancer tissues using PMS2 mouse mAb with DAB staining.



Immunohistochemical

Immunohistochemical analysis of paraffin-embedded human rectal cancer tissues using PMS2 mouse mAb with DAB staining.



Immunohistochemical

Immunohistochemical analysis of paraffin-embedded human rectal cancer tissues using PMS2 mouse mAb with DAB staining.